



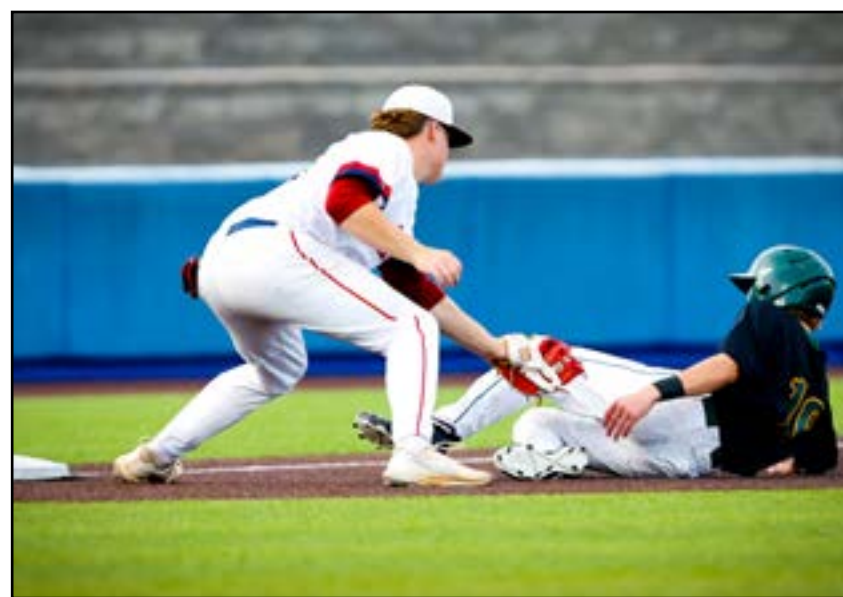
# BASEBALL



2023 Clark's Pump-N-Shop State Baseball Tournament  
Presented by UK HealthCare



## 2023 CLARK'S PUMP-N-SHOP STATE TOURNAMENT PRESENTED BY UK HEALTHCARE



### Table of Contents

- GENERAL SPRING INSTRUCTIONS FOR ALL SPORT AND SPORT ACTIVITIES** ..... 1
- Supersedure Note** ..... 1
- Covid-19 Guidance** ..... 1
- Masks/Face Coverings ..... 1
- Competitors ..... 1
- Water - COVID-19 Guidance ..... 1
- Public Health Protocols ..... 1
- Venue Logistics** ..... 1
- Venue Safety ..... 1
- Signage, Balloons and Noisemakers ..... 1
- Pets ..... 2
- Sportsmanship** ..... 2
- Health Information** ..... 2
- Athletic Trainers ..... 2
- Physical Exam Form ..... 2
- Emergency Action Plan ..... 2
- Inclement Weather Procedures ..... 2
- Heat Index Program ..... 2
- Bylaw 22 Reminder** ..... 3
- Requirement to Accompany Team Members ..... 3
- Videotaping, Media and Intellectual Property Rights** ..... 3
- General Media Rights ..... 3
- School Media Credentials ..... 4
- Traditional Media Credentials ..... 4
- Media Rights Fee ..... 4
- Telecast/Webcast Including NFHS Network Restrictions ..... 4
- Music Copyright ..... 4
- Filming ..... 4
- Event Merchandise** ..... 4
- Official KHSAA Championship Photos ..... 4
- BASEBALL SPECIFIC INSTRUCTIONS** ..... 4
- Brief Welcome** ..... 4
- KHSAA Contacts** ..... 4
- Qualifying for Participation** ..... 4
- Competition Dates, Location and Schedule** ..... 4
- Venue and Addresses ..... 4
- Opening Round ..... 4
- Quarterfinals ..... 4
- Semifinals ..... 4
- State Final ..... 4
- Ticket Availability and Fan Admission** ..... 4
- Tickets ..... 4
- Fan Admission ..... 4
- Clear Bag Policy ..... 4
- Postseason Rosters, Limitations and Substitutions** ..... 4
- Postseason Rosters ..... 4
- Limitations and Substitutions ..... 4
- Pre-Event Logistics** ..... 4
- Conference Call ..... 4
- Pre-Tournament, On-Site Meeting ..... 4
- GE63 - Team Information Form ..... 4
- Lodging ..... 4
- Parking ..... 4
- Venue Logistics** ..... 4
- Admission Into Venue ..... 4
- Participant Entry ..... 4
- Team Entry ..... 4
- Dressing/Locker Rooms ..... 4
- Field Specifications ..... 4
- Home and Visiting Team Dugouts ..... 4
- water and Team Coolers ..... 4
- Practice ..... 4
- Infield Practice ..... 4
- Conducting the Event** ..... 4
- BrackeT ..... 4

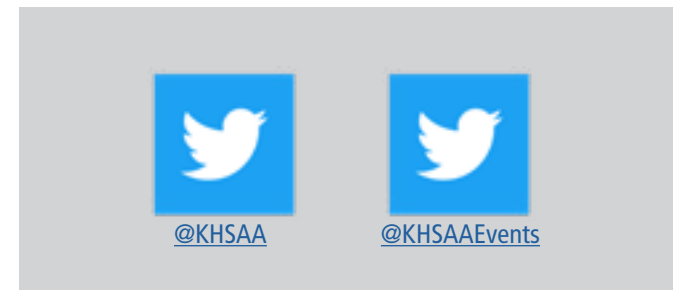
- Daily Schedule ..... 7
- Between Innings ..... 7
- Rules Points of Emphasis/Clarifications** ..... 7
- Playing Rules ..... 7
- Required Ball Type ..... 7
- Contest Completion Reminders ..... 7
- Speed-Up Rules - Run Rules and Courtesy Runners ..... 7
- Pitcher Warm-Up Area ..... 7
- Pitch Count Regulation ..... 7
- Use of Electronic Devices ..... 7
- Media ..... 7
- State Event Umpires** ..... 7
- Post Event** ..... 7
- Results ..... 7
- Trophies and Awards ..... 7
- Expense Allowance Reimbursement Restrictions ..... 7
- Responsibility for Fans and Participants ..... 7

Throughout these instructions, portions that are different from previous seasons, or changed due to COVID-19, have been highlighted yellow.

2280 Executive Drive | Lexington, Ky., 40505 | www.KHSAA.org

### KHSAA Staff

- Commissioner ..... Julian Tackett
- Associate Commissioner ..... Butch Cope
- Assistant Commissioner ..... Darren Bilberry
- Assistant Commissioner ..... Sarah Bridenbaugh
- Assistant Commissioner ..... Joe Angolia
- General Counsel ..... Chad Collins
- Information Technology Director ..... Rob Catron
- Media Relations and Publications Director ..... Connor Link
- Event Services and Social Media Director ..... Jenny Elder
- Administrative Assistant/Office Manager ..... Kara Howard
- Administrative Support Specialist ..... Jeremy Ison
- Administrative Support Specialist ..... Jeanie Molloy
- Physical Plant Director ..... Roy Tatum



## GENERAL SPRING INSTRUCTIONS FOR ALL SPORT AND SPORT ACTIVITIES

### SUPERSEDURE NOTE

The information in these instructions supersedes any information previously distributed, including the Competition Rules. In many cases, these rules have been revised over the last couple of years through the pandemic to the point where time has not permitted complete overhaul and revision of the competition rules. All involved should review items such as tiebreakers and procedures for competition and consider this document authoritative. Contact the primary event contact with any additional questions.

### COVID-19 GUIDANCE

The KHSAA's complete "Healthy at Sports, Stage 5 - Partnering for Progress, Guidance for Continued Practice and Competition during the Pandemic" document can be found at the following link: [COVID GUIDANCE](#).

In addition to specific guidance, this document includes guidance for all sports, officials and media. The information in this document should be thoroughly reviewed by all managers, participants and spectators attending a district or regional tournament.

REMINDER - Anyone attending or participating in a KHSAA regular season or postseason event should review their symptoms before arriving. Those that are ill or displaying any symptoms of COVID-19 should stay home.

Some differences in the guidance are necessitated by the differences in sports, facilities and geographic areas, which are pronounced during normal years and magnified this school year.

### MASKS/FACE COVERINGS

Masks/Face coverings for non-competitors and the requirements surrounding these items are a matter of local jurisdiction. At minimum, any local or specific mask-requiring ordinance should also include a requirement for managers to post signage and make regular announcements.

### COMPETITORS

Due to safety concerns, competitors who are considered to be aerobically exercising should not be required to wear masks during competition.

### WATER - COVID-19 GUIDANCE

Coaches and athletes are reminded to bring their own water bottles as no community dispensers can be used.

### PUBLIC HEALTH PROTOCOLS

Each member school and event host is expected to adhere to public health standards regarding isolation and quarantine as well as the adopted Return to Play Protocol in the event of a positive test in a participant or team staff member.

The host is responsible for adherence to COVID-19 guidelines in accordance with normal home site procedures.

### VENUE LOGISTICS

#### VENUE SAFETY

Persons who attend KHSAA events may be injured as a result of the risks inherent in being a spectator at such events. Please advise KHSAA or venue personnel of any situation you encounter which you or a team member feels should be addressed to minimize risk to all involved. Any crowd control problems or acts of violence should be brought to the attention of the event staff, which will contact the appropriate authorities. Attendance at events is a vital family and community based activity which is encouraged.

#### SIGNAGE, BALLOONS AND NOISEMAKERS

Signs/banners are permitted at the facility but must be of good taste and sportsmanship.

Signs/banners must be handheld or attached in a manner not to damage the existing structure. Signs/banners shall not cover any corporate signage or obstruct the view of patrons. Amplified noisemakers or items that replicate game management cues are not permitted inside the facility. These items include, but are not limited to: air horns, electronic amplifiers, portable sound systems, instruments that require additional electricity, game clock horns and whistles. Artificial noisemakers of any kind are not permitted inside the facility per NFHS rules. Balloons, which can block the view of other patrons, are not permitted at the event. Only venue provided amplified music is permissible, but only during pre-competition or natural and planned breaks.

### PETS

The KHSAA welcomes service dogs utilized by guests with disabilities along with the appropriate documentation or identification. This allowance does not include providing emotional support or companionship but rather specific ADA-related work or tasks.

Service dogs must be harnessed, leashed or tethered at all times, unless special circumstances exist as are defined in federal law, and will be required to rest in the seating area of the individual with a disability, rather than in the aisle.

A guest whose service dog poses a threat to the safety of other guests and employees, or whose dog is not housebroken, may be asked to escort the dog off the premises.

Any service dog that displays vicious behavior towards other guests or employees may be denied entry or removed from the facility.

All other animals are prohibited. This policy is in place regardless of any published information the venue provides on its own signage or message board materials including websites.

### SPORTSMANSHIP

The KHSAA requires officials to enforce sportsmanship rules. High school athletics emphasize positive values and all parties have worked hard to create a sense of teamwork, respect, responsibility and perspective. We remind you that officials expect good behavior and will quickly penalize misconduct. We encourage and appreciate your help in letting this competition reflect mutual respect among all participants and officials.

### HEALTH INFORMATION

#### ATHLETIC TRAINERS

The Association will use the services of UK HealthCare to provide trainers for the KHSAA state events. Athletic Training Staff will be available beginning one (1) hour prior to the event and remain available throughout the day.

#### PHYSICAL EXAM FORM

Schools are reminded that they are responsible for ensuring parental permission to seek medical treatment is authorized for each participant. The Principal, Athletic Director or Head Coach can use a copy of KHSAA Form GE04 (Physical Exam Form) for this purpose. The form contains appropriate emergency treatment permission and should be brought for each athlete at the competition.

#### EMERGENCY ACTION PLAN

KHSAA staff will, in consultation with the athletic training staff and venue personnel, develop an Emergency Action Plan (EAP) for this event and the plan will be available upon arrival from the athletic training staff. If an athlete or fan is in need of emergency medical attention, contact the nearest KHSAA staff member, official, UK HealthCare trainer or venue staff so emergency medical services can be reached. An AED will be located at the team check-in area.

#### INCLEMENT WEATHER PROCEDURES

In the event of inclement weather, it is the duty of the KHSAA, in consultation with the host facility, to make decisions in regards

to postponement, rescheduling or cancelation, including getting proper notification to all teams, media outlets and schools. Staff will utilize the KHSAA website and Twitter to provide updates as well as an emergency text notification system. KHSAA officials will make every effort to learn the weather forecast prior to the start of competition as the safety of the public and participants will be the most important factor in any decision.

### **HEAT INDEX PROGRAM**

Tournament play will adhere to the KHSAA's Heat Index Program.  
Tournament administration will be responsible for tracking and implementing the program's guidelines.  
Should the heat index reach 95 degrees, mandatory 10-minute water breaks will be given every 30 minutes.  
At 99 degrees, play shall stop, and the heat index will be monitored every 30 minutes.

### **BYLAW 22 REMINDER**

#### **REQUIREMENT TO ACCOMPANY TEAM MEMBERS**

You are reminded that KHSAA Bylaw 22 requires a principal, coach or another approved individual of the school to be present along with any student-athlete who is representing a member school.

### **VIDEOTAPING, MEDIA AND INTELLECTUAL PROPERTY RIGHTS**

#### **GENERAL MEDIA RIGHTS**

At all levels of competition during postseason play, control of media access and location at those contests is with the KHSAA, and as such, there are necessary policies and restrictions concerning this event and these provisions will be vigorously enforced. The intellectual property, corporate, broadcasting and media rights to all postseason rounds belong exclusively to the KHSAA, including titling agreements and sponsorships.  
Control of media access and location at all levels of postseason play is with the KHSAA.  
At all levels of KHSAA sponsored postseason events, including district, regional, first round, second round, quarterfinal and state competition, allowances shall be made for television media to record video of the contests, without play-by-play, at no charge as long as the sole purpose is for newscast highlights.  
At all levels of KHSAA sponsored postseason events, including district, regional, first round, second round, quarterfinal and state competition, allowances shall be made for other media outlets to be admitted to the contests as long as the sole purpose is for reporting of the actions taking place at the contest and promoting the event.  
Participating teams in KHSAA events shall be allowed to record the contest, for coaching purposes only, if space is available with such availability at the discretion of the KHSAA and may be required to sign a waiver indicating that the KHSAA shall be held blameless for any and all liability to those parties involved in the video recording.  
Any video recording must not violate existing, acknowledged, written copyright protection or intellectual property agreements and cannot be broadcast in any form, including internet and social media.  
If space is deemed available, the KHSAA has the right to designate a specific area for video recording and no video recording will be allowed outside of that area.  
The determination of space availability is solely with the KHSAA and shall be equitable for all teams.  
A freelance/commercial photographer is any person, including a school employee, not representing an established media outlet or a person who will capture images from the event.

#### **SCHOOL MEDIA CREDENTIALS**

Each school is permitted one (1) school media pass at KHSAA State Championship events, valid only for a student or full-time school employee, for the sole purpose of reporting the events for school internal publications.  
Space permitting, school media may be granted floor access consistent with traditional media access.  
Outside entities such as professional photographers, videographers or parents may not utilize the school media pass.  
The school media pass may not be used for taking pictures that will later be sold as these individuals need to apply for a

freelance/commercial photographer pass and pay the requisite fee.  
This pass must be requested by a school administrator in advance of the start of the event at [credentials.khsaa.org](https://credentials.khsaa.org), which is included as a link at the end of these instructions.

### **TRADITIONAL MEDIA CREDENTIALS**

Traditional media members (print, TV, radio, online) interested in covering KHSAA State Championship events should apply for credentials through the KHSAA's online system. A link to the credential application is included at the end of these instructions. The deadline to apply is 3 p.m. the day before competition begins.  
Applications should be submitted by the editor or director at each organization.  
Complete information should be submitted for all attendees (including unique email addresses and cell phone numbers), as the KHSAA will use these methods to communicate information surrounding the event.  
Media outlets may be limited during this event.  
Freelance/commercial photographers, as defined herein, will not be granted access to KHSAA events unless the requisite media rights fee is paid.  
KHSAA Media policies are outlined online at - <https://khsaa.org/news-stats-pubs/media-resources/media-credentials/>

### **MEDIA RIGHTS FEE**

Freelance/commercial photographers as defined in these instructions and radio stations interested in originating a broadcast of a KHSAA State Championship event are subject to a media rights fee.  
Information regarding the fee for each event is available through the online credentialing system.

### **TELECAST/WEBCAST INCLUDING NFHS NETWORK RESTRICTIONS**

The KHSAA is a full member of the NFHS Network and as such, restrictions exist on all postseason levels.  
A telecast, as used in these instructions, is a video, live or delayed account, including play-by-play, of any contest over the air.  
A webcast, as used in these instructions, is a video, live or delayed account, including play-by-play, of any contest distributed using the internet.  
The KHSAA is the only entity permitted to produce live or delayed video from state championship events including first round, second round, quarterfinal and state rounds, and is the sole authority for approval of any other.  
No entity, unless given prior approval by the KHSAA shall be permitted to produce video telecasts or broadcasts, with the exception of approved media outlets solely recording highlights for news use.  
No entity, including media members, may stream live video content during postseason events including the use of social media products such as Facebook@ Live.  
The mandated minimum fee schedule will be published annually by the Commissioner's office on the KHSAA website.  
For all postseason play, all questions regarding live or delayed broadcast or telecast policies, including requests for approval shall be referred to the Media Relations and Publications Director for approval by the Commissioner.

### **MUSIC COPYRIGHT**

KHSAA schools are reminded to adhere to all music copyright laws.

### **FILMING**

External power sources may not be used by patrons.  
Spectators may film with a hand-held camera from the spectator area, but may not in any manner transmit live video through any resource, including personal social media accounts.  
Violators are subject to removal.

### **EVENT MERCHANDISE**

KHSAA State Championship apparel will be available for sale at the event and online at the following link - [khsaa.teamip.com](https://khsaa.teamip.com).  
KHSAA State Championship apparel will be available for sale at the event and online post event via the TeamIP link on all pages of the KHSAA website.



## **2023 State Spring Championship presented by UK HealthCare**

TeamIP is the exclusive vendor of championship apparel, please look for their tent at the championship event to purchase memorabilia.

No outside merchandise representative of the event may be produced by any other entity and sold or distributed inside the playing facility.

### **OFFICIAL KHSAA CHAMPIONSHIP PHOTOS**

The KHSAA pays for professional photography coverage of the event.

Official championship photos will be available for purchase through the KHSAA's online photo gallery within 72 hours of the completion of the event, [khsaaphotos.org](https://khsaaphotos.org).





# 2023 Clark's Pump-N-Shop State Baseball Tournament presented by UK HealthCare

## Table of Contents

- BASEBALL SPECIFIC INSTRUCTIONS ..... 3**
- Brief Welcome..... 3**
- KHSAA Contacts ..... 3**
- Qualifying for Participation ..... 3**
- Competition Dates, Location and Schedule ..... 3**
  - Venue and Addresses..... 3
  - Opening Round ..... 3
  - Quarterfinals ..... 3
  - Semifinals ..... 3
  - State Final..... 3
- Ticket Availability and Fan Admission..... 3**
  - Tickets ..... 3
  - Fan Admission ..... 4
  - Clear Bag Policy..... 4
- Postseason Rosters, Limitations and Substitutions.... 4**
  - Postseason Rosters ..... 4
  - Limitations and Substitutions ..... 4
- Pre-Event Logistics..... 5**
  - Conference Call ..... 5
  - Pre-Tournament, On-Site Meeting ..... 5
  - GE63 - Team Information Form ..... 5
  - Lodging ..... 5
  - Parking ..... 5
- Venue Logistics..... 5**
  - Admission Into Venue..... 5
  - Participant Entry ..... 6
  - Team Entry..... 6
  - Dressing/Locker Rooms..... 6
  - Field Specifications ..... 6
  - Home and Visiting Team Dugouts ..... 6
  - water and Team Coolers ..... 7
  - Practice..... 7
  - Infield Practice..... 7
- Conducting the Event ..... 7**
  - BrackeT..... 7
  - Daily Schedule ..... 7
  - Between Innings..... 7
- Rules Points of Emphasis/Clarifications ..... 7**
  - Playing Rules ..... 7
  - Required Ball Type ..... 7
  - Contest Completion Reminders ..... 8
  - Speed-Up Rules - Run Rules and Courtesy Runners..... 8
  - Pitcher Warm-Up Area ..... 8
  - Pitch Count Regulation..... 8
  - Use of Electronic Devices..... 8
  - Media ..... 8
- State Event Umpires ..... 8**
- Post Event ..... 8**
  - Results..... 8
  - Trophies and Awards ..... 8
  - Expense Allowance Reimbursement Restrictions..... 9
  - Responsibility for Fans and Participants ..... 9
- Important Website Links ..... 10**



**BASEBALL SPECIFIC INSTRUCTIONS**

**BRIEF WELCOME**

Congratulations on behalf of the Kentucky High School Athletic Association Board of Control and staff for advancing to the 2023 Clark's Pump-n-Shop State Baseball Tournament presented by UK HealthCare.

Refer to this manual and the important website links included at the end of the document to guide you through preparation for your participation.

**KHSAA CONTACTS**

The primary contact for baseball is Associate Commissioner Butch Cope ([bcope@khsaa.org](mailto:bcope@khsaa.org)).

If Mr. Cope is not available, Assistant Commissioner Darren Bilberry ([dbilberry@khsaa.org](mailto:dbilberry@khsaa.org)) is the backup contact.

Media, broadcast/webcast and statistics related questions should be directed to Media Relations and Publications Director, Connor Link ([clink@khsaa.org](mailto:clink@khsaa.org)).

Questions may also be directed to the KHSAA offices at (859) 299-5472 and any member of the staff can refer you to the correct party.

**QUALIFYING FOR PARTICIPATION**

The winning teams from the 16 Region tournaments advance to state championship.

First and second round games will be played June 1-3 at Counter Clocks Field in Lexington. Semifinals and final will be played June 9-10 at Kentucky Proud Park on University of Kentucky Campus, also in Lexington.

First round matchups are determined by blind draw to be conducted for Regions 1-16.

Game times for first and second round games will be assigned following the draw.

**COMPETITION DATES, LOCATION AND SCHEDULE**

The Clark's Pump-N-Shop State Baseball Tournament presented by UK HealthCare will be held on June 1-3 and June 9-10.

**VENUE AND ADDRESSES**

[Counter Clocks Field](#)

[207 Legends Lane, Lexington KY 40505](#)

[Kentucky Proud Park](#)

[510 Wildcat Ct., Lexington, KY 40506](#)

**OPENING ROUND**

- Thursday, June 1, 10 a.m., 1:30 p.m., 5 p.m., 8:30 p.m. ET
- Friday, June 2, 11 a.m., 1:30 p.m., 5 p.m., 8:30 p.m. ET

**QUARTERFINALS**

- Saturday, June 3, 11 a.m., 1:30 p.m., 5 p.m., 8:30 p.m. ET

**SEMIFINALS**

- Friday, June 9, 12:30 p.m., 6:30 p.m. ET

**STATE FINAL**

- Saturday, June 10, 7 p.m. ET

**TICKET AVAILABILITY AND FAN ADMISSION**

**TICKETS**

All tickets will be sold online via GoFan, the KHSAA's official digital ticket vendor, available through [khsaatickets.org](https://khsaatickets.org).



For the first round and the quarterfinals:

- General admission ticket prices for each day are:
  - o \$16 if purchased in advance of the event day.
  - o \$19 if purchased the day of competition.
- General admission ticket prices for entrance to all games in the weekend are:
  - o \$50 which is valid for both the first round and the quarterfinals and only sold through the day before first round begins.

For the semi-final round and the finals:

- General admission ticket prices for each day are:
  - o \$16 if purchased in advance of the event day.
  - o \$19 if purchased the day of competition.
- General admission ticket prices for entrance to all games in the weekend are:
  - o \$30 which is valid for both the semi-finals and final and only sold through the day before semi-finals begin.

Kentucky Children's Hospital is sponsoring FREE tickets for all children 5-and-under. To receive these tickets, you must "purchase" these seats through [khsaatickets.org](https://khsaatickets.org) even though there will be no charge.

Tickets are good for one entry per game. If you leave the ballpark during a game, you cannot enter again until the fan admittance for the next game.

Fans should purchase their tickets before they arrive at the venue to facilitate entry and minimize waiting.

There will be no paper tickets sold or cash sales at the walk-up gate.

Any on-site transactions will be digital using the personal devices of the customer or equipment provided by the KHSAA.

No screenshots of tickets shall be honored at any time.

GoFan's training page for buying and sharing tickets is included as a link at the end of these instructions.

Please see the policy in these instructions related to service animals and their allowances.

Anyone interested in purchasing Suite level tickets may contact Lexington Counter Clocks Ticket Office at (859) - 252 - 4487

**FAN ADMISSION**

All spectators must enter and exit through the admission gate which will open one (1) hour prior to the start of each game.

Keep in mind, the time may vary if previous game is not complete.

Upon entering the park, there will be no re-entry without the purchase of a new ticket.

**CLEAR BAG POLICY**

For the games at Counter Clocks Field, all bags are subject to search upon entry.

UK Athletics has instituted a clear bag policy for all UK home facilities. Policy information can be found at [ukathletics.com/clearbag](https://ukathletics.com/clearbag).

**POSTSEASON ROSTERS, LIMITATIONS AND SUBSTITUTIONS**

**POSTSEASON ROSTERS**

Schools have previously logged into the KHSAA website and designated the postseason roster, which is separate from the regular-season varsity roster.

Roster revisions had to be made before the first date of the postseason when online rosters were closed and considered final.

Only players appearing on the school's postseason roster as of the first date of the postseason are eligible to participate in any round.

The online, postseason roster may be printed from the KHSAA website as the valid listing of available players.

**LIMITATIONS AND SUBSTITUTIONS**

A school may enter up to 21 players in each postseason game from the roster submitted online.



Failure to adhere to this policy will result in penalties permitted within Bylaw 27.  
No players other than the 21 designated for each game may be in uniform or participate in warm-up activities.  
There may be no additional players added to the roster following the first day of the first week of the district tournament, including for those teams that advance to state.  
Substitutions to the 21 that dress may be made, but they must be listed on the postseason roster.

**PRE-EVENT LOGISTICS**

**CONFERENCE CALL**

Details for a web conference via Zoom for participating coaches and athletic directors forwarded to you.  
Additional instructions regarding the call will be sent via email once the field is set.  
Participants can set up from any location to join the conference and are encouraged to join by computer to view pertinent information, maps, etc.

**PRE-TOURNAMENT, ON-SITE MEETING**

There will be no mandatory, pre-tournament meeting at the park, participants should instead use the conference call to ask any questions.

**GE63 - TEAM INFORMATION FORM**

By Tuesday, May 30, the Athletic Director or Designated Representative from all participating teams must submit form GE63 (Team Information Form), which is included as a link at the end of these instructions.

**LODGING**

Team housing for the state baseball tournament is arranged through the Lexington Convention and Visitors' Bureau.  
As part of the bid package from the city of Lexington, specific hotels listed below have allotted teams a block of rooms (10) at a discounted price.  
The Clarion Hotel North is available for \$80 per night by calling (859) 233-0512 (Jamie Thomas).  
Schools are responsible for all lodging bills.  
Have your school's or Board of Education's Sales Tax Exempt number with you at check-in to avoid sales taxes from being added to the hotel bill.  
With other events going on in the Lexington area, those needing lodging should reach out to the property immediately.

**PARKING**

Games at Counter Clocks Field:  
There will be a \$5 per car (cash only) charge for parking and \$20 charge for any buses.  
The team bus will be admitted at no charge and will offload at the Team Pass Gate on the third base side of the stadium and then proceed to the bus parking area.  
Games at Kentucky Proud Park:  
Teams will enter via the pass gate which is located at the front (behind home plate) of Kentucky Proud Park.  
Patrons may park in the Green (Cooper Drive), Blue (Alumni Drive) and Purple lots at Kroger Field.

**VENUE LOGISTICS**

**ADMISSION INTO VENUE**

No passes, other than those produced for the tournament, will be honored at the gate.  
All individuals in the dugout not in uniform must have a team-party credential which must be worn at all times.  
When in doubt, those people who have no direct responsibility during the game should be in the stands.  
All other individuals must have a ticket for admission.



All other coaches and members of the traveling party who are not in the possession of one of the 15 team-party credentials will not be entitled to complimentary admission and will be directed to a ticket window.

**PARTICIPANT ENTRY**

Upon arrival, 21 players dressed in game uniform will be admitted through the pass gate.  
The Designated Representative listed on the GE63 Form from each school will be given 15 Team Party Passes for Coaches, managers, administrators for entry.

**TEAM ENTRY**

Refer to the Daily Tournament Schedule on the baseball page of the KHSAA website, and included as a link at the end of these instructions, for team arrival and warm-up times.  
Each participating team is allowed 15 team-party credentials to include all superintendents, principals, athletic directors, coaches, managers, trainers, statisticians, bus drivers and other adults designated by the school as a member of the traveling party on a daily basis.  
Team party passes are valid for both weekends of the tournament.  
Once inside the park, a KHSAA representative will deliver the 15 team-party credential to the head coach to be distributed to the team party.  
Credentials are for entry and dugout access and must be visibly worn at all times.  
There is a limit to the total number of participants in the dugouts, which may not exceed thirty (30) for any postseason contest to include all players, coaches and staff.  
When in doubt, those people who have no direct responsibility during the game should be in the stands.  
It should be noted that the school will be held accountable for the conduct of all persons in the dugout area.  
Coaches must be listed on the KHSAA school page and have completed all of the Bylaw 25 coaching requirements.  
Individuals outside of the 15 team-party credential holders will not be entitled to complimentary admission and will be directed to purchase a ticket through [khsaatickets.org](http://khsaatickets.org).  
Lost or stolen credentials will not be replaced.

**DRESSING/LOCKER ROOMS**

Locker rooms will not be provided.  
Participants are asked to arrive at the venue dressed and ready to compete.

**FIELD SPECIFICATIONS**

The fence distances at Counter Clocks Field are 320 feet down the left field line, 400 feet to center field and 318 down the right field line.  
The fence distances at Kentucky Proud Park are 335 feet down the left field line, 320 feet down the right field line and 400 feet to straight away centerfield.  
The outfield walls are clearly bordered by a warning track.

**HOME AND VISITING TEAM DUGOUTS**

The team in the top half of the bracket will be the home team in all games and use the third base dugout.  
The team in the bottom half of the bracket will be the visiting team in all games and use the first base dugout.  
The home team will wear light colored jerseys and the visiting team will wear dark colored jerseys.  
If a school wears the wrong color jersey, the team reimbursements may be affected.  
A representative of the school and the KHSAA event staff will inspect the dugout before and after each game.  
It is expected that dugouts will be left in the same condition as they are found.  
There are to be no sunflower seeds on site.  
The KHSAA will take whatever action is necessary, including issuing a fine to the particular school and assessing the cost for cleanup to those schools leaving the dugouts in unsatisfactory condition or damaging any stadium property.



All team members and coaches shall adhere to NFHS playing rules and remain in the dugout unless occupying a fielding position, base, batter's box, on-deck circle, coaching box or warming up in the bullpen.

Each team is expected to help in the retrieval of foul balls down their side to make certain that the best possible balls are being used.

**WATER AND TEAM COOLERS**

Team coolers will need to come through the team gate.

Hydration stations and water coolers are not provided in the dugouts so coaches and athletes should bring their own water.

**PRACTICE**

There will be no practice opportunities at either facility.

Please do not contact either facility directly to try to schedule practice time.

Should you need a practice facility, contact Fayette County Public Schools Athletic Director Robbie Sayre ([robbie.sayre@fayette.kyschools.us](mailto:robbie.sayre@fayette.kyschools.us)).

The batting cage will remain closed throughout the event.

**INFIELD PRACTICE**

Teams will be given a 10-minute timed infield prior to their game, per the time schedule.

- Warm-up time may be altered or eliminated if weather or schedule delays occur. Keep in mind, there is plenty of area on the berm area to stretch/toss and begin your warm-up.

Teams are restricted to their dugout area while the opposing team is taking infield practice.

There will be no infield practice while field maintenance is taking place.

Only the 21 individuals dressed should participate in any on-field warm up/infield.

**CONDUCTING THE EVENT**

**BRACKET**

The tournament bracket can be found on the baseball page of the KHSAA website in the Baseball Tournament Results section.

The bracket is also provided as a link at the end of these instructions.

**DAILY SCHEDULE**

A complete event schedule and timetable is included on the baseball page of the KHSAA website and as a link at the end of these instructions.

It should be noted that team introductions will include the starters only for the first round, second round and semifinals, with the full roster being introduced only for the final.

**BETWEEN INNINGS**

Between innings, the team taking the field, particularly the pitcher, should delay approximately one (1) minute before leaving the dugout.

There are numerous promotions and other activities surrounding the games and we don't want players forced to stand waiting for the promotion or activity to end.

**RULES POINTS OF EMPHASIS/CLARIFICATIONS**

**PLAYING RULES**

National Federation (NFHS) playing rules will be utilized without exception.

No game shall be started in the postseason after 11 p.m. local time.

**REQUIRED BALL TYPE**

Spalding is the official baseball of the KHSAA.



The Spalding WC4100HS with the NFHS authenticating mark is a legal ball for play in postseason.

**CONTEST COMPLETION REMINDERS**

This is a reminder to coaches, umpires and administrators in regard to interrupted games.

Postseason games must be played to completion or completed per run rule.

All state tournament games will be seven (7) innings unless a run rule is in effect.

If the entire game cannot be played due to weather or other issues, it is a suspended game and shall be completed.

Any completion of a suspended game shall resume at the point of interruption, including substitutions, ejections, etc.

**SPEED-UP RULES - RUN RULES AND COURTESY RUNNERS**

In accordance with National Federation Baseball Rule 4-2-2, the game shall end when the losing team is behind 10 or more runs and has had at least five (5) turns at bat or behind 15 runs after 2 1/2 or three (3) innings per the approved Board of Control game ending rules.

The speed-up rule allowing for a courtesy runner for the pitcher and catcher when they reach base will be used in all postseason games.

**PITCHER WARM-UP AREA**

Pitcher's warm-up area is located outside the outfield walls. Teams are responsible for damage to the facility in this area.

**PITCH COUNT REGULATION**

The KHSAA Pitching Limitations, as published on the KHSAA website, shall be utilized throughout the tournament.

All pitchers throwing innings on day two (if no weather interruptions, this will be Friday for the first weekend) will be recorded as throwing on day one (if no weather interruption, this will be Thursday for the first weekend) to equalize rest periods for quarterfinal teams.

The KHSAA will select an individual to serve as the Pitch Count Recorder.

At the end of each inning, a pitch count will be communicated to the dugout.

**USE OF ELECTRONIC DEVICES**

Electronic devices may be used in accordance with NFHS playing rules.

**MEDIA**

No media is permitted in the dugout and only allowed on the field of play during postgame award ceremonies. Media are allowed in designated areas on top of the dugouts to get photographs.

**STATE EVENT UMPIRES**

In compliance with the Federal Court Decree, the Commission composed of the Commissioner and the four (4) assistants will assign all umpires.

**POST EVENT**

**RESULTS**

Scores will be posted on the KHSAA/Riherd's Scoreboard on the KHSAA website following each game.

**TROPHIES AND AWARDS**

The state champion will receive a team trophy and 21 medals.

The state runner-up will receive a team trophy and 21 medals.

Each of the semifinalists will receive a team trophy and 21 medals.

Each quarterfinalist team not advancing to the semifinals will receive a plaque for the team.

Each quarterfinalist not advancing to the semifinals will have one (1) member named by the coaching staff to the All-Tournament Team.





Each semifinalist not advancing to the championship game will have two (2) members named by the coaching staff to the All-Tournament Team.

The runners-up will have three (3) members named by the coaching staff to the All-Tournament Team.

The champions will have two (2) members named by the coaching staff to the All-Tournament Team and one (1) named "Most Valuable Player."

No presentation of any trophy will be made until the field of play is cleared of all coaches and players. Please return to the dugouts as soon as possible following the game so the presentations can begin.

All-Tournament awards, team trophies and medallions will be presented immediately following each game to the non-advancing team.

**EXPENSE ALLOWANCE REIMBURSEMENT RESTRICTIONS**

**GENERAL POLICY**

- An expense allowance will be paid for teams traveling to the field hockey, soccer, volleyball, football, basketball, baseball and softball tournaments.
- The total number of players and travel party reimbursed is twenty (24) for field hockey, volleyball, soccer, baseball and softball to include a partial allowance for twenty-one (21) players, plus three staff.
- The total number of players and travel party reimbursed is thirty-three (33) for basketball to include a partial allowance for fifteen (15) players and fifteen (15) cheerleaders, plus three (3) staff.
- The total number of players and travel party reimbursed is fifty-nine (59) for football.
- No reimbursement is paid for the individual sports of Golf, Cross Country, Swimming and Diving, Wrestling, Tennis or Track and Field
- No reimbursement is paid for the sport-activities of Cheer, Dance, Bowling, Esports, Archery or Bass Fishing.
- Schools inside a 40 mile, one-way radius from the event site will only be reimbursed as a commuting team.

**MILEAGE**

- Each team will be reimbursed \$2 per mile, round trip from the school address to the competition facility address for field hockey, volleyball, soccer, basketball, baseball and softball.
- Each team will be reimburse \$3 per mile, round trip from the school address to the competition facility address for football.
- Any mileage allowance will be for the round-trip distance from the school location to the host city, in accordance with mileage numbers provided by Google Maps.

**COMMUTING TEAMS**

- Each commuting team will be reimbursed mileage as detailed above, plus \$15 per player per contest played.

**TEAMS USING LODGING**

- Schools are responsible for the initial payment of all lodging bills and will be reimbursed the lodging allowance, provided it is utilized.
- If you are exempt from state sales tax, be prepared to show that verification to the hotel.
- Teams using lodging shall be paid for the actual nights used as verified by the property through the morning following elimination from the tournament.
- If housing is assigned to specific hotels, teams not commuting but failing to stay in the assigned property will only be reimbursed mileage for their participation.

**RESPONSIBILITY FOR FANS AND PARTICIPANTS**

**OFFSETS TO EXPENSE ALLOWANCE REIMBURSEMENT OR OTHER PENALTY**

- The participating schools are responsible for the conduct of the fans supporting that team.
- Any and all steps including fines or other penalties (including the withholding of team expense payments) will be levied in the event of mass entrance to the field.
- Any and all steps including fines or other penalties (including the withholding of team expense payments) will be levied in



the event of players or others entering the stands during or after a game.

- Expense allowance reimbursements will be made net of any damages done to the stadium/stands/court or playing facility that can be directly attributed to the student body or representatives of the school.
- By requesting reimbursement, the school acknowledges liability for damage directly attributable to the school, student body or fans.
- The KHSAA will take whatever action is necessary, including fining the particular school and assessing the cost for repair to those schools leaving the seating area in a damaged condition or destroying any stadium property, including fences, gates and barriers.

**DAMAGE TO FACILITY**

- The KHSAA will take whatever action is necessary, including fining the particular school and assessing the cost for repair, to those schools leaving the seating area in a damaged condition or destroying any venue property, including fences, gates and barriers that can be directly attributed to the student body or representatives of the school.

**IMPORTANT WEBSITE LINKS**

- [KHSAA Baseball Site](#)
- [SI114 - Spring KHSAA Championship Media Credentials](#)
- [Competition Rules](#)
- [State Umpire Rotation](#)
- [BA101 - Pitching Rule Verification](#)
- [BA127 - Pitch County Daily Log Form](#)
- [GE63 - Team Information Form](#)
- [GoFan Tickets](#)
- [GoFan Ticket Training](#)
- [State Championship Bracket](#)
- [State Championship Schedule](#)



THE KENTUCKY OFFICE OF HIGHWAY SAFETY TEAMING UP WITH THE KHSAA TO DRIVE HOME A LIFE-SAVING MESSAGE FOR ALL MOTORISTS – BUCKLE UP AND PUT THE PHONE DOWN.

THESE BASIC SAFETY PRACTICES MAKE A CONSIDERABLE DIFFERENCE IN PREVENTING CRASHES AND LESSENING THE SEVERITY OF INJURIES AND THE NUMBER OF DEATHS ON OUR ROADWAYS. EACH YEAR IN KENTUCKY, DISTRACTED DRIVING RESULTS IN MORE THAN 50,000 CRASHES, MORE THAN 15,000 INJURIES AND APPROXIMATELY 200 DEATHS. LEARN MORE AT KYHIGHWAYSAFETY.COM.