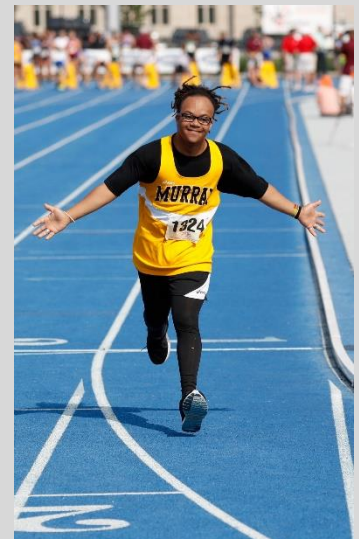
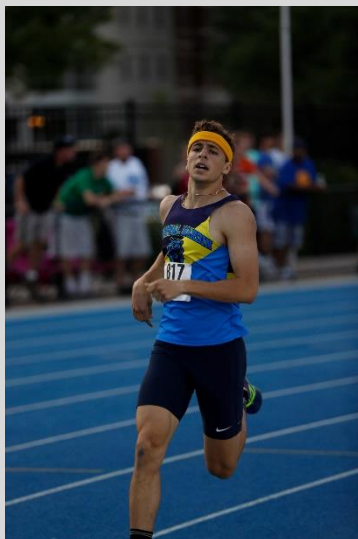




2017 KHSAA Track & Field State Meet Instructions



CONTENTS

INTRODUCTION AND CONTACT INFORMATION	2
KHSAA STAFF CONTACTS	2
QUALIFYING FOR PARTICIPATION IN CHAMPIONSHIP	2
PRE-EVENT LOGISTICS	2
DIRECTIONS	2
GPS ADDRESS	3
PARKING	3
PRE-TOURNAMENT CONFERENCE CALL	3
LODGING INFORMATION	3
BYLAW 22 REMINDER	3
COMPETITION DATES AND TIMES	3
ADMISSION INTO VENUE	4
TEAM ENTRY	4
COACH AND COMPETITOR PACKETS	4
TICKETS	4
TRACK CONFIGURATION, WARM-UPS AND TRACK SCHEDULE	4
STATE PRACTICE RUN	5
VENUE LOGISTICS	5
TEAM TENTS, WARM-UP AREA	5
DRESSING FACILITIES	5
FACILITY SAFETY	5
GENERAL FACILITY INFORMATION	5
COACHES AND OFFICIALS MEETING	6
CONDUCT OF EVENT	6
LANE ASSIGNMENTS	6
CONTESTANTS AND TEAM SCORE AT THE STATE MEET	6
RULES POINTS OF EMPHASIS	6
SUBSTITUTIONS	6
NUMBERS	6
LOST/MISPLACED NUMBERS	6
SCRATCH PROCEDURE AND PENALTY	6
HEALTH INFORMATION	7
ATHLETIC TRAINERS	7
EMERGENCY ACTION PLAN	7
INHALER	7
STATE EVENT OFFICIALS	7
STARTING BLOCKS	7
MARSHALS	7
SPECIFIC EVENT RESTRICTIONS AND RULES	8
RELAYS AND RELAY CARDS/FORMS	8
4X800 RELAY/800 RUN	8
1600 RUN/3200 RUN	8
4X100/4X200 RELAY	8
4X400 RELAY	8
FIELD EVENT QUALIFYING FROM PRELIMINARIES TO FINALS	8
SHOT AND DISCUS - COMMON IMPLEMENTS	9
WIRELESS COMMUNICATION	9
APPEALS	9

APPEAL PROCEDURE	9
APPEALABLE SITUATION	10
SEVERE WEATHER POLICY, INCLEMENT WEATHER DECISIONS AND MEET POSTPONEMENT	10
MEDIA INFORMATION.....	11
SCHOOL MEDIA	11
TRADITIONAL MEDIA.....	11
MEDIA RIGHTS FEE	11
TEAM BROADCASTS	11
INTELLECTUAL PROPERTY RIGHTS.....	11
BROADCAST/TELECAST/WEBCAST RIGHTS	11
CHAMPIONSHIP PHOTOS.....	11
EVENT MERCHANDISE.....	12
POST EVENT	12
RESULTS.....	12
TEAM AND INDIVIDUAL AWARDS.....	12
MIDWAY UNIVERSITY/KHSAA FEMALE STUDENT-ATHLETE OF THE YEAR AWARD.....	12
NFHS COACH OF THE YEAR.....	12
ANNIVERSARY TEAM RECOGNITION.....	12
FINANCES AND FINANCIAL REIMBURSEMENT.....	12
CONTACTS.....	13
IMPORTANT LINKS AND FORMS	13

INTRODUCTION AND CONTACT INFORMATION

- Congratulations from the Board of Control and staff of the Kentucky High School Athletic Association on advancing to the State Track & Field Meet
- It is hoped that these instructions answer most questions about participation in the 2017 KHSAA State Track & Field Meet

KHSAA STAFF CONTACTS

- Administrators and/or Coaches should contact Assistant Commissioner Sarah Bridenbaugh (sbridenbaugh@khsaa.org), Assistant Commissioner Darren Bilberry (dbilberry@khsaa.org), or call Jeanie Molloy (jmolloy@khsaa.org), who serves as Mrs. Bridenbaugh’s Administrative Support Specialist at the KHSAA offices should you have any questions
- Media and Statistics inquiries should be directed to Communications Director Joe Angolia at the KHSAA offices (jangolia@khsaa.org)
- Inquiries may also be directed to the KHSAA offices at (859) 299-5472 and any member of the staff should be able to refer you to the correct party

QUALIFYING FOR PARTICIPATION IN CHAMPIONSHIP

- The State Meet shall include in each event, twenty-four (24) competitors, and any person tied for the twenty-fourth qualifying position to include:
 - a) The top two competitors in each event at the region meet shall automatically qualify for the state meet
 - b) The next ten best times/heights/marks from the state at-large shall qualify for the state meet
- If your team or individual qualifies for the State Meet, there is no formal entry process
- The Regional results serve as State Meet entries

PRE-EVENT LOGISTICS

DIRECTIONS

- The UK Track & Field Sports Complex is located at 698 Sports Center Drive, Lexington, KY 40506, off of Cooper Drive.

GPS ADDRESS

- Outdoor Track & Field , 698 Sports Center Drive, Lexington, KY 40506

PARKING

- Parking will be "on your own" for all parking at the facility
- Parking for buses will be available in the Commonwealth Stadium lot only
- There will be attendants there to help drivers assure they are in the correct spot
- Team buses MUST follow the bus drop route provided on the map available on the track page of the KHSAA website or the link found at the end of these instructions
- Buses may drop off teams at Sports Center Drive and then will be asked to move to park in the Stadium
- Once parked, bus drivers will check in at the same tent as teams
- General parking will be limited near the track
- All towing and parking regulations will be enforced
- Parking for fans is available in the parking garage located on Sports Center Drive (there will be a fee on Friday only in the garage) and parking will be free at Commonwealth Stadium the entirety of the meets
- Please tell fans to be prepared for a short walk to the Track Complex
- Accessible parking is available in lot R3 immediately next to the track and baseball complex

PRE-TOURNAMENT CONFERENCE CALL

- A conference call will be held among all participating teams on Tuesday, May 16, 2017
- Schools will be sent via email, additional instructions regarding the call following the regional championship meets
- Participants can call from any location to join in the conference

LODGING INFORMATION

- Each coach will arrange for lodging for his or her contestants
- Three hotels are available with room rates for state participant teams (all costs will be covered by the individual school):
 - Campbell House located at 1375 S. Broadway, Lexington, KY 40504
 - When making reservations contact Hannah Oliver by phone at 859-519-1319 or by email at holiver@thecampbellhouse.com
 - Be sure to tell her that you are a school involved in the KHSAA State Track & Field Championships
 - Rates are \$109 per night
 - Four Points by Sheraton Hotel located at 1938 Stanton Way, Lexington 40511
 - When making reservations, please contact by phone at 859-259-1311
 - Be sure to tell them that you are a school involved in the KHSAA State Track & Field Championships
 - Rates are \$109 per night
 - Clarion Hotel North located at 1950 Newtown Pike, Lexington 40511
 - When making reservations, please contact by phone at 859-233-0512
 - Be sure to tell them that you are a school involved in the KHSAA State Track & Field Championships
 - Rates are \$99 per night

BYLAW 22 REMINDER

- KHSAA Bylaw 22 requires a member of the faculty of the school to be present along with any student-athlete who is representing a member school
- See Bylaw 22 in the KHSAA Handbook if you have any questions

COMPETITION DATES AND TIMES

- The KHSAA Track and Field State Meet for Class 1A, 2A, 3A will be held at the Outdoor Track and Field Complex on the campus of the University of Kentucky in Lexington on Friday and Saturday, May 19 and 20
- Class 2A will compete on Friday, May 19 with Class 1A and 3A on Saturday, May 20
- The entire KHSAA Track and Field Championship schedule for Class 1A, 2A, and 3A can be found on the KHSAA website at the link listed at the end of these instructions

ADMISSION INTO VENUE

TEAM ENTRY

- Buses can drop off teams and equipment at 698 Sports Center Drive outside of the Track & Field Complex
- Bus drivers should be given a copy of the bus route map located at the end of these instructions
- All coaches must check in their teams and retrieve their packet at the team drop off area
- That area can be found on the map on the KHSAA website or the link listed at the end of these instructions
- Each contestant (qualified or alternate) will be issued a competitor number assigned after qualification in the regional meet (including alternates)
- Those contestants are responsible for maintaining these numbers at all times
- A contestant in the state track meet must show his or her number at the team admittance gate to enter without charge and only during that athlete's class meet
- State meet contestants should allow plenty of time to report for their events
- No event start will be delayed to allow for the arrival of an athlete
- Each team (boys or girls) qualifying one to twelve athletes will be afforded two (2) coaching passes and one additional pass for a team attendant/trainer/manager
- Each team (boys or girls) qualifying more than twelve athletes will be afforded three (3) coaching passes and one additional pass for a team attendant/trainer/manager

COACH AND COMPETITOR PACKETS

- Coaches may pick up information packets including competitor numbers at the participant entrance tent at the track on Friday (2A only) and Saturday (1A/3A) in accordance with the meet schedule
- In the packet, the coaches will receive their competitors' numbers with pins, coach's wristbands, a time schedule and an appeal form
- The team/participant check in will open 90 minutes before the start of each meet
- Sportsmanship and Transportation forms are no longer required

TICKETS

- The price of admission will be \$10.00 for all non-contestants over the age of 10
- There will be no re-entry at this event
- All competitor admissions are issued to the Head Coach upon sign in at the main sign-in tent
- There will be NO PETS ALLOWED in this area for this event, please remind your fans

TRACK CONFIGURATION, WARM-UPS AND TRACK SCHEDULE

- The gates will be open for fans of the 2A meet at 3:30 p.m. on Friday
- The track will be open for warm-ups for the 2A meet at 3:45 p.m. on Friday
- The gates will be open for fans of the 1A meet at 8:00 a.m. on Saturday
- The track will be open for warm-ups for the 1A meet at 8:15 a.m. on Saturday
- The gates will be open for fans of the 3A meet at 3:30 p.m. on Saturday
- The track will be open for warm-ups for the 3A meet at 3:45 p.m. on Saturday
- Maps/schematic diagrams are posted on the KHSAA website at the link listed at the end of these instructions defining zones, areas for teams, etc.
- These define any area restricted to coaches and participants NOT COMPETING in field events
- No runners are allowed on the track after events begin, except during the designated warm-up periods and at the awards tent when needed
- Competitors are to report to the gate area in tent city on the first call to their events
- Competitors are to report to the clerk area equipment building (near tent city) on the second call to their events
- Participants will then be escorted to the starting line or the field event area
- Attendants shall not accompany a competitor to the starting line or during the race
- Block holders will only be allowed in situations where it is determined necessary by the starter and past experiences have lead management to believe there will be no need for a block holder

- Competitors will not be allowed to have non-participating athletes accompany them to field events areas
- There will be coaches boxes provided for Pole Vault coaches – the coach must be listed in the KHSAA database and be certified (via NFHS or PVSCB) in order to have access to the box

STATE PRACTICE RUN

- There will be no practice time or day for the State Track and Field Meet prior to the date of competition for each class

VENUE LOGISTICS

TEAM TENTS, WARM-UP AREA

- The only area for team tents will be in the designated team area (tent city), which is on the far side of the track from the entrance and houses a warm-up track
- Schools may NOT set up their tents ahead of time or in any other location, they must wait until the facility is open for team check in
- It is especially important that teams clean up their area at the conclusion of their meet
- Saturday morning's competitors (Class 1A) should be especially diligent when cleaning their area and doing so in a timely manner in order to coordinate the afternoon meet's team arrivals
- The only entry point for competitors will be at the team admission gate
- Please see the bus drop off route provided in the maps on the khsaa.org track page under state information
- The gate into tent city will be marshaled and only competitors with numbers and coaches with proper wristbands will be admitted; please be sure to make your parents and fans aware of this restriction

DRESSING FACILITIES

- Dressing facilities are limited
- There are no lockers available
- Athletes should come dressed to compete

FACILITY SAFETY

- Several areas of the facility will be marked as off limits with flagging, barriers and signage
- Coaches are directly responsible for athlete's adherence to these areas
- Athletes are not to wear spikes when sitting in the bleachers
- Excessive noise, to include artificial noise makers, radios and musical instruments, will be prohibited for the duration of the State Meet
- Athletes and school representatives may not bring implements from other sports (Frisbees, footballs, nerf balls, baseballs, soccer balls, softballs, etc.) as space is limited by the amount of athletes present and safety is minimized if these activities occur
- Coaches and athletes should drink plenty of water throughout the day, particularly if it is a warm day
- The Training staff will have plenty of water available
- The Association will provide trainers for the State Track Meet
- One tent for Athletic Trainers is located inside the gate of tent city
- There will be an additional service area near the finish line

GENERAL FACILITY INFORMATION

- Food vendors will be located at the concourse level
- These concession stands will have an ample supply of items, over which the Association does not control price
- The Association's official novelty vendor will be set up on the concourse level behind the bleachers
- KHSAA Policy, as adopted by the Board of Control allows individuals to videotape events at the State Track Meet but the event cannot be live broadcast in any fashion
- However, the policy expressly prohibits the use of any external power supply
- Schools are responsible for paying for their own expenses to the State Meet
- Persons who attend KHSAA events may be injured as a result of the risks inherent in being a spectator at such events

- Attendance at events is a vital family and community based activity which is encouraged
- Please advise KHSAA or venue personnel of any situation you encounter which you or a squad member feels should be addressed to minimize risk to all involved

COACHES AND OFFICIALS MEETING

- There will be a short briefing with referees prior to the start of the meet which is voluntary, however this could be an opportunity for any coaches to ask questions
- Selected meet officials will have a mandatory meeting with the Meet Director and Assistant Commissioner, and will be notified of the time and place
- The Referees will be available for consultation at the time and place listed on the state event schedule
- This briefing is optional and is solely for the purpose of inquiries and clarifications
- Any questions regarding legality shall be resolved prior to the start of the meet

CONDUCT OF EVENT

LANE ASSIGNMENTS

- The standard order of events will be followed from the Rules Book with the fastest section running last
- The 4x800 relay and 800 meter run will be run in two sections, with 14 in the faster section, and 10 in the slower section
- The 100/110 Hurdles, 100 Dash, 4x200 Relay, 4x100 Relay, 400 Dash, 300 Hurdles, 200 Dash and 4x400 Relay will be run in three sections, with the two fastest sections using all available lanes
- The 1600 and 3200 meter runs will be run in one race each

CONTESTANTS AND TEAM SCORE AT THE STATE MEET

- Only teams and individuals that have qualified in a regional meet are eligible to enter the state meet
- All individuals placing eighth or higher in each event shall score team points in the state meet
- The team score shall be determined by totaling the points scored by the eight place finishers, using a 10-8-6-5-4-3-2-1 scale

RULES POINTS OF EMPHASIS

SUBSTITUTIONS

- There are no substitutions at the State Meet
- Relay competitors may only come from the competitors listed at the region (maximum eight (8) per relay) including alternates

NUMBERS

- Numbers shall be worn on the front in the running events
- Numbers shall be worn on the front in the field events except for high jump and pole vault
- The field event chief will direct placement in high jump and pole vault
- Hip numbers shall be worn as directed by the clerk in selected events

LOST/MISPLACED NUMBERS

- In the case of a lost number:
 - Complete forms at main entrance gate
 - KHSAA staff will confirm that athlete has events remaining as replacement numbers will not be issued to eliminated/disqualified athletes
 - Upon verification, KHSAA staff will sign form authorizing replacement and alert admission personnel to admit the student
 - Once signed, the form is to be brought to press box for re-issue
- Lost number replacements will be issued for a \$10.00 charge per number

SCRATCH PROCEDURE AND PENALTY

- There is no penalty for athletes scratching from events after the meet starts, or for athletes failing to finish an event once they are entered

- **NEW TO 2017, if an individual has been scratched from any event prior to midnight on Tuesday, May 16th, 2017, the next at-large qualifier will be rolled up to complete the full field of 24 in each event
- Any scratches after Tuesday will result in a scratched competitor

HEALTH INFORMATION

ATHLETIC TRAINERS

- The Association will use the services of the University of Kentucky Sports Medicine Department to provide trainers for the State Track and Field Meet
- UK Sports Medicine will have one tent located inside tent city , and another near the finish line
- In addition, several volunteer medical professionals will also be on hand
- Trainers will be available for 45 minutes before each race for assistance as well as during and after each competition

EMERGENCY ACTION PLAN

- Any crowd control problems or acts of violence are to be directed to the event staff, the University Police, or the On-Duty Officer
- Equipment available on field
 - First Aid Kit(s), cooler with ice and bags, crutches and splint bag, and additional athletic training equipment
- Contacting EMS
 - Please contact the nearest KHSAA staff member, KHSAA official, or UK Sports Medicine ATC if an athlete or fan is in need of emergency medical attention before dialing 911

INHALER

- National Federation rules allow for the use of an inhaler in the area of a Track and Field or Cross Country meet, but only with the written permission of a physician
- If an athlete is to be involved in Track and Field or Cross Country competition and must use an inhaler or have one available, Form TR120 must be completed and presented to the Referee during the pre-race meeting
- TR120 can be found in the list of important links at the end of these instructions

STATE EVENT OFFICIALS

- In compliance with the Federal Court Decree, the Commission composed of the Commissioner and the four assistants will assign all referees
- Officials presiding over the event are licensed and assigned by the Kentucky High School Athletic Association

STARTING BLOCKS

- All races where the first leg (or entire race) is 400 meters or less shall use blocks for the start
- All contestants and teams will use starting blocks available at the University of Kentucky
- For the few schools that continue to utilize the Moye starting blocks, this is legal and has been approved by the Games Committee
- If a school desires to use that type of starting block, the athletes/school must provide those blocks, and such equipment must be approved by the Meet Director prior to usage
- There shall be no block attendants allowed unless the starter deems them necessary within the rules

MARSHALS

- There will be a marshaling area in the vicinity of the finish line for athletes to report to, immediately following each race
- The athletes will be released quickly unless there is a violation during the race
- After any final race, the athletes are to immediately proceed to the awards area

SPECIFIC EVENT RESTRICTIONS AND RULES

RELAYS AND RELAY CARDS/FORMS

- Each coach with a qualified relay team has already submitted the names of possible competitors prior to the regional meet
- When relay teams check in with the Clerk of Course, the Clerk will mark the competitors that the coach chooses from the available listing
- Eight (8) participants were able, prior to the regionals, to be named to a relay team, any four (4) of whom may be used in the finals
- Only those relay contestants who actually participate will be considered official entries
- Relay competitors do not need to be the same from the Regional Meet to the State Meet

4X800 RELAY/800 RUN

- The 4x800 Meter Relay and the 800 Meter run will use a staggered start with a one-turn stagger
- The athletes may break to the inside at the start of the front stretch of the track
- Lapped runners shall run a normal course if permitted to continue in the race
- Participants may use tape on the track, but shall remove all tape on competition surfaces after the events

1600 RUN/3200 RUN

- The 1600 Meter Run and 3200 Meter Run will utilize a one-turn stagger with the runners breaking to the inside of the track at the start of the back stretch of the track
- Lane assignments for the 1600 Meter Run and 3200 Meter Run will utilize the same format for starting listed above for the 3200 Meter Relay and 800 Meter Run
- Lapped runners shall run a normal course if permitted to continue in the race

4X100/4X200 RELAY

- The 4x100 Meter and 4x200 Meter relay will be run in lanes all the way
- Participants may use tape on the track, but shall remove all tape on competition surfaces after the events

4X400 RELAY

- The 4x400 Meter relay will be run with a three-turn stagger
- In the 4x400 Meter relay race, the first leg runs the entire distances in lanes
- The runners of the second leg in the 4x400 relay race shall be free to take over any position on the track after the curve at the entrance to the back straightaway, which is marked with a broken line and cones
- The third relay exchanges, "California Exchange" shall be used thereafter until the completion of the event
- Participants may use tape on the track, but shall remove all tape on competition surfaces after the events

FIELD EVENT QUALIFYING FROM PRELIMINARIES TO FINALS

- The order of competition in the throwing events will be set up so the best thrower will go last
- The order of competition in the jumping events will be set so the best jumper jumps last
- The top nine competitors in the trials will qualify for the finals in the field events (one more than the number of medaled places)
- The starting heights for the high jump and pole vault have been determined by the Games Committee:
 - Class A Girls High Jump- 4'08"
 - Class A Boys High Jump- 5'06"
 - Class A Girls Pole Vault- 6'06"
 - Class A Boys Pole Vault- 09'00"
 - Class AA Girls High Jump- 04'06"
 - Class AA Boys High Jump- 5'08"
 - Class AA Girls Pole Vault- 6'06"
 - Class AA Boys Pole Vault- 10'00"
 - Class AAA Girls High Jump- 4'08"
 - Class AAA Boys High Jump- 5'10"
 - Class AAA Girls Pole Vault- 7'06"
 - Class AAA Boys Pole Vault- 10'00"

- Games Committee reserves the right per NFHS rules to adjust starting height due to unforeseen conditions

SHOT AND DISCUS - COMMON IMPLEMENTS

- In addition to the common implements provided by the KHSAA, athletes may use their own implements at the region and state competition, provided they pass inspection
- If an athlete weighs in his/her implement, it then becomes a "common" implement and may be used by any athlete in the competition
- If an athlete misses the weigh-in/inspection period of their implement, they must use a common implement provided by the KHSAA or another athlete
- Illegal implements will be marked and impounded and coaches notified that they can be reclaimed at the conclusion of the event
- All shot and discus shall be weighed prior to the competition
- A legal shot and discus shall be provided for use by competitors, in the case that athletes do not have their own
- The KHSAA will have the following implements available for use at the State Meet:

Brand	Boys/Girls	Item	Description	Weight
Gill	Girls	Shot	Brass	4K (95mm)
Gill	Girls	Shot	Stainless Steel	4K
Gill	Girls	Shot	Cast Iron	4K
Gill	Girls	Discus	Rubber	1K
Gill	Girls	Discus	Wooden	1K
Gill	Girls	Discus	Pink	1K
Gill	Girls	Discus	Blue	1K
Gill	Girls	Discus	Red	1K
Gill	Girls	Discus	Black	1K
Gill	Boys	Shot	Brass	12 lbs.
Gill	Boys	Shot	Stainless Steel	12 lbs.
Gill	Boys	Shot	Cast Iron	12 lbs.
Gill	Boys	Discus	Rubber	1.6K
Gill	Boys	Discus	Wooden	1.6K
Gill	Boys	Discus	Green	1.6K
Gill	Boys	Discus	Blue	1.6K
Gill	Boys	Discus	Black	1.6K

WIRELESS COMMUNICATION

- Electronic devices may be used in unrestricted areas and coaching boxes, providing the location does not interfere with progress of the meet as determined by the meet referee
- Electronic devices shall not be used to transmit information to the competitor during the race or trial
- Electronic devices shall not be used for any review of an official's decision

APPEALS

- Appeals shall be submitted to the meet director who will present the appeal to the appropriate referee
- The jury of appeals shall be the final authority
- Only those issues for which the NFHS rules specify are appealable
- This shall be turned in at the finish line

APPEAL PROCEDURE

- A coach shall first protest to the referee
- If the coach still feels that the terms and conditions of competition or the application of the rules have been misapplied or misinterpreted, a written appeal shall be made to the jury

- Situation which are subject to appeal include, but are not limited to:
 - Misapplication of the rules, which must be filed within 10 minutes after the announcement of event results
 - Correction of clerical or team scoring errors which may be corrected up to forty 48 hours after the end of the meet, unless another time period is specified in advance by the Games Committee or Meet Director
 - Correction of meet results involving an ineligible participant which may be made at any time when discovered
- Failure to follow a procedure contained in the terms and conditions of competition announced in advance by the Games Committee or Meet Director
- This would include such items as the time schedule, the number of qualifiers to advance, number of trials, etc.

APPEALABLE SITUATION

- The following are non-appealable situations:
 - Any judgment decisions pertaining to violations or alleged violations of the rules
 - A decision made by the finish judges or timers that does not involve misapplication of a rule, or the terms and conditions of competition
 - Whether a start is fair and legal
- If a coach wishes to appeal a track or field situation, the appeal must be put in writing and submitted immediately (within 10 minutes) after the situation occurs
- There will be extra appeal forms available in the team entrance tent for this purpose
- The HEAD COACH ONLY shall submit the appeal to the finish line where the Meet Director will process
- The jury of appeals shall be the final authority

SEVERE WEATHER POLICY, INCLEMENT WEATHER DECISIONS AND MEET POSTPONEMENT

- The Referee or head official must delay or cancel a competition at the first flash of lightning or sound of thunder at the site and the site should be cleared of all persons immediately by event administration
- If it is anticipated that the storm will pass, the competition may be resumed following a three (3) minute warm-up period, no sooner than thirty (30) minutes after the last sight of lightning or the last sound of thunder
- If the severe weather is of great length or intensity, the Referee or lead meet official has the responsibility and authority to cancel the competition
- Officials are encouraged to learn the weather forecast prior to meet time
- Safety of the public and participants is the most important factor in any decision of this type
- While it would be ideal if all parties could meet and agree on any re-scheduling of meets necessitated by inclement weather or other natural events, this may not be practical
- The KHSAA will make decisions with regards to re-scheduling in the event of postponement and ensure that all teams, media outlets and schools are properly notified
- In accordance with the adopted policies, after the meet has begun, the referee shall make such determination
- There is always a possibility of inclement weather
- In that event, be prepared to move to a place of shelter
- Should it begin to rain, the meet will continue on schedule unless there are signs of lightning or thunder or the Games Committee determines that it is unsafe to continue a specific event or the meet as a whole
- Should weather force a postponement or delay, immediately leave the bleacher area and team area upon hearing the announcement
- Should evacuation be necessary, directions will be given by uniformed officers as well as meet officials
- Facilities at the University of Kentucky are available as emergency shelter or you can seek refuge in the parking garage or in individual or team transportation

- In any and all circumstances, use prudent judgment in determining whether or not you should remain in the bleachers
- Should the meet be suspended, the following procedure will be utilized for resuming the schedule:
 - When the decision is made to resume the meet, uniformed officers and meet officials will circulate through the parking lots and a PA announcement will be made that the meet has resumed
 - When resumed, there will be a 15 minute warm-up and waiting period prior to the first call for the first resumed event
 - Once the first event has begun, the meet will continue on the standard basic time schedule

MEDIA INFORMATION

SCHOOL MEDIA

- Each school is permitted one (1) school media pass at KHSAA State Championship events, valid only for a full-time staff member or a student for the sole purpose of reporting the events and for taking non-commercial pictures for yearbooks, school publications, etc.
- Outside entities such as professional photographers, videographers or parents may not utilize the school media pass
- This pass must be requested in advance of the start of the event through the online system

TRADITIONAL MEDIA

- Traditional media members (print, TV, radio, online) interested in covering KHSAA State Championship events should apply for credentials through the KHSAA's online system
- Applications should be submitted by the editor or director at each organization
- Freelance photographers will not be granted access to KHSAA events unless the requisite media rights fee is paid

MEDIA RIGHTS FEE

- Freelance/commercial photographers and radio stations interested in originating a broadcast of a KHSAA State Championship event, are subject to a media rights fee
- Information regarding the media rights fee for each event is available through the online credentialing system

TEAM BROADCASTS

- By paying the requisite fee, each school qualifying for a KHSAA State Championship event may designate one (1) radio station or website to originate an AUDIO-only broadcast of each game its affiliated school participates in
- An official representative of the participating school shall designate to the KHSAA which station/website will be permitted to broadcast its game using the online system
- The radio station/website shall then apply for championship credentials through the KHSAA's online credentialing system
- Originating stations/websites will be subject to a media rights fee, which will be outlined through the online credentialing system
- The KHSAA is the only entity permitted to originate or authorize a video broadcast of KHSAA State Championship events

INTELLECTUAL PROPERTY RIGHTS

- The intellectual property, corporate, broadcasting and media rights to the postseason rounds prior to the state finals belong exclusively to the KHSAA, including titling agreements and sponsorships

BROADCAST/TELECAST/WEBCAST RIGHTS

- At all levels of competition during postseason play, control of media access and location at those contests is with the KHSAA

CHAMPIONSHIP PHOTOS

- Official championship photos of the event will be available for purchase through the KHSAA's online photo gallery within 72 hours of the completion of the event VIDEOTAPING
- External power sources may not be used by patrons

- Patrons may videotape any portion of this competition from the confines of their defined spectator area but may not in any manner transmit video live through any resource, including personal social media accounts
- Violators are subject to removal

EVENT MERCHANDISE

- KHSAA State Championship apparel will be available for sale at the event and online post event
- TeamIP is the exclusive vendor of championship apparel, please look for their tent at the championship event to purchase memorabilia
- No outside merchandise representative of the event may be produced by any other entity and sold or distributed inside the playing facility

POST EVENT

RESULTS

- Results will be finalized and official at the conclusion of the race
- Meet officials will validate results and those will be posted at khsaa.org as soon as they are final
- After final results have been posted online, paper copies will be posted to a results board located near the admissions gate and the concession stand

TEAM AND INDIVIDUAL AWARDS

- The individual and relay awards area will be located inside the track
- The team trophies will be awarded at the awards area located inside the track
- Competitors shall report to the awards area immediately following the finals in each event
- Results announcements will be made as results are confirmed
- We understand that athletes may be involved in other events and may not be able to stay for the awards presentation, those athletes' medals can be picked up at a later time
- Medals will be awarded for the first eight (8) places in each event at the state meet
- Team trophies will be given to the top four (4) teams in each class immediately following the conclusion of the last event
- Teams shall be present for the team awards presentation
- As soon as the awards are presented, the top four (4) teams in each classification are to report for official meet pictures
- Pictures will be taken by the KHSAA photographer of all recipients
- Please go to khsaaphotos.org to view

MIDWAY UNIVERSITY/KHSAA FEMALE STUDENT-ATHLETE OF THE YEAR AWARD

- Midway University will present a Female Student-Athlete of the Year award at each of the KHSAA's 14 girls' state championship events
- This award is based upon overall athletic performance (60%), academic achievement (20%) and community service (20%)
- To submit an application for a student-athlete, please click on the link at the end of these instructions

NFHS COACH OF THE YEAR

- The National Federation of High Schools' Coaches Association recognizes the Coach of the Year Award in each of the sports sanctioned by the KHSAA
- The KHSAA staff will make every effort to contact the coach to have them present for this award

ANNIVERSARY TEAM RECOGNITION

- Silver and golden anniversary teams (25th and 50th), will be recognized at each state championship if the school wishes to participate

FINANCES AND FINANCIAL REIMBURSEMENT

- There is no school reimbursement for this event
- Member schools are responsible for all expenses incurred for participation in this event

CONTACTS

- Assistant Commissioner Sarah Bridenbaugh, cell 740-607-7217, sbridenbaugh@khsaa.org
- Assistant Commissioner Darren Bilberry, cell 859-333-5411, dbilberry@khsaa.org
- State Meet Director Gordon Bocock, cell 606-271-0714, coachbo@twc.com

IMPORTANT LINKS AND FORMS

- KHSAA Website Track Information - <http://www.khsaa.org/track>
- Track Competition Rules: <http://khsaa.org/handbook/competitionrules/trcompetitionrules.pdf>
- Bylaw 22 - <http://khsaa.org/handbook/bylaws/20162017/bylaw22.pdf>
- State Meet Time Schedule: <http://khsaa.org/track/2017/statetrackmeetschedule.pdf>
- State Meet Area Map: <http://khsaa.org/track/2017/trackmap.jpg>
- State Meet Bus Map: <http://khsaa.org/track/2017/busmap.jpg>
- State Meet Parking Map: <http://khsaa.org/track/2017/parkingmap.jpg>
- TR120 – [Medical Report Form](#)
- GE 79 – [Midway University/KHSAA Female Student Athlete of the Year Nomination Form](#)
- School Media Request Form – <http://khsaa.org/school-media-request-form/>
- Media Credentials Request Form - <http://khsaa.org/news-stats-pubs/media-resources/media-credentials/>