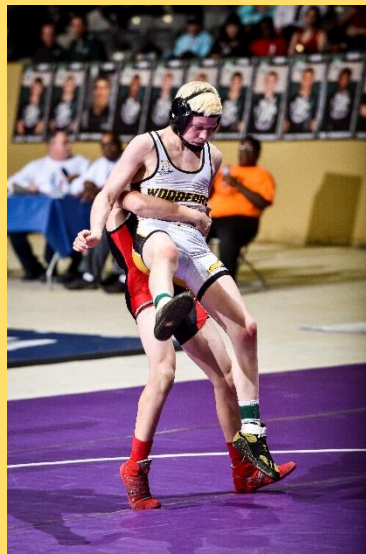




2017 KHSAA STATE WRESTLING CHAMPIONSHIPS INSTRUCTIONS FOR TEAMS AND COACHES



2017 WRESTLING STATE TOURNAMENT INFORMATION

CONTENTS

INTRODUCTION AND CONTACT INFORMATION	2
KHSAA STAFF CONTACTS.....	2
PRE-EVENT LOGISTICS.....	2
PRE-TOURNAMENT CONFERENCE CALL	2
GENERAL INFORMATION	2
DIRECTIONS.....	2
GPS COORDINATES	3
PARKING	3
LODGING.....	3
COACHES PACKET PICKUP	3
BYLAW 22 REMINDER	4
COMPETITION DATES AND SCHEDULE.....	4
ADMISSION INTO VENUE	4
PARTICIPANTS.....	4
GENERAL PUBLIC/FANS/NONPARTICIPANTS.....	4
COOLERS	4
T-SHIRT SALES/DISTRIBUTION (NON-KHSAA SALES)	4
BEDDING	4
VENUE LOGISTICS.....	5
OFFICIAL SCALES AND WEIGH-INS.....	5
DAY ONE	5
DAY TWO	5
PARADE OF CHAMPIONS	5
CONDUCT OF EVENT	5
BRACKETS	5
SCOREBOARDS.....	5
RULES POINTS OF EMPHASIS	5
ENTRIES AND RESULTS.....	5
ATHLETES UNABLE TO COMPETE.....	6
HEALTH INFORMATION	6
ATHLETIC TRAINER.....	6
VENUE SAFETY	6
EMERGENCY ACTION PLAN	6
STATE EVENT OFFICIALS.....	6
SPORTSMANSHIP.....	6
MEDIA, CORPORATE, TV, RADIO, WEBCAST, TRADEMARKS.....	7
SCHOOL MEDIA.....	7
TRADITIONAL MEDIA	7
MEDIA RIGHTS FEE.....	7
TEAM BROADCASTS.....	7
INTELLECTUAL PROPERTY RIGHTS	7
VIDEOTAPING.....	7
NFHS NETWORK.....	7
BROADCAST/TELECAST/WEBCAST RIGHTS.....	8
EVENT MERCHANDISING	8
POST EVENT	8

TROPHIES AND AWARDS.....	8
CHAMPIONSHIP PHOTOS	8
FINANCES AND EXPENSES	8
IMPORTANT WEB LINKS	9

INTRODUCTION AND CONTACT INFORMATION

- Congratulations from the Board of Control and staff of the Kentucky High School Athletic Association on advancing to the state championships
- It is hoped that these instructions answer most questions about participation in the 2017 KHSAA State Wrestling Championships

KHSAA STAFF CONTACTS

- Administrators and Coaches should contact Michael Barren (mbarren@khsaa.org) or his Administrative Assistant Larrecia Williams (lwilliams@khsaa.org) at the KHSAA offices should you have any questions
- Media and Statistics Inquiries should be directed to Communications Director Joe Angolia at the KHSAA offices (jangolia@khsaa.org)
- Inquiries may also be directed to the KHSAA offices at (859) 299-5472 and any member of the staff should be able to refer you to the correct party

PRE-EVENT LOGISTICS

PRE-TOURNAMENT CONFERENCE CALL

- A conference call will be held for all participating Coaches on Tuesday, February 14
- Schools will be sent via email, additional instructions regarding the call
- Participating schools will be invited to participate at 10:00 a.m. ET
- Participants can call from any location to join the conference call

GENERAL INFORMATION

- The 54th Annual KHSAA State Wrestling Championships will be held on February 17 & 18, 2017 at the ALLTECH ARENA in the Kentucky Horse Park, 4089 Ironworks Parkway, Lexington, KY 40511 (kyhorsepark.com) (859-233-4303)
- All Consolation Matches shall be 1-2-2 minutes in length
- This includes the 3rd, 4th, 5th, 6th, 7th and 8th place matches which will also follow that format
- All matches for each weight class in the Consolation finals will be wrestled concurrently

DIRECTIONS

- From Downtown Lexington
 - Take Newtown Pike (922) northbound approximately 9 miles to Iron Works Pike (1973)
 - At the four-way stop, turn left and travel westbound
 - The campground entrance will be on the right in 1.6 miles, and the park's main entrance will be on the right in 2 miles, just past the campground entrance
- From Louisville
 - Travel eastbound on Interstate 64 for approximately 70 miles to Interstate 75
 - Take Exit 75 northbound towards Cincinnati (merging traffic will join I-75 traffic in the left-hand lane and will have approximately .5 miles to move to the right-hand lane to get off at Exit 120)
 - At the top of the exit ramp, turn right and travel eastbound on Iron Works Pike (1973)
 - The park's main entrance will be on the left in .5 miles and the park's campground entrance will be on the left in .9 miles
- From Northern Kentucky
 - Travel southbound on Interstate 75 towards Lexington to exit 120
 - At the top of the exit ramp, turn left and travel eastbound on Iron Works Pike (1973)

- The park's main entrance will be on the left in .7 miles and the park's campground entrance will be on the left in 1.1 miles
- From South Central Kentucky
 - Travel northbound on Interstate 75 towards Lexington to exit 120
 - At the top of the exit ramp, turn right and travel eastbound on Iron Works Pike (1973)
 - The park's main entrance will be on the left in .5 miles and the park's campground entrance will be on the left in .9 miles
- From Eastern Kentucky
 - Travel westbound on Interstate 64 towards Lexington to Interstate 75
 - Interstate 64 will merge with Interstate 75 on the east side of Lexington, so take the merged I-64W/I-75N towards Cincinnati/Louisville to Exit 120 at Iron Works Pike (1973)
 - At the top of the exit ramp, turn right and travel eastbound
 - The park's main entrance will be on the left in .5 miles and the park's campground entrance will be on the left in .9 miles
- From Western Kentucky
 - Travel the Martha Layne Bluegrass Parkway, drive east
 - Turn left on Man o' War Blvd. and travel northbound for .3 miles
 - Turn right on US-60/Versailles Road and travel eastbound for 1.5 miles
 - Take the ramp on to KY-4 N/New Circle Road and travel 4.1 miles north/eastbound
 - Take exit 8 for US-25/Georgetown Road and turn left onto Georgetown Road and travel northbound towards Georgetown for 5.5 miles
 - At the stop light, turn right onto Iron Works Pike (1973)
 - The park's main entrance will be on the left in 1.2 miles and the park's campground entrance will be on the left in 1.6 miles

GPS COORDINATES

- Please note that GPS and phone mapping functions may not accurately direct you to the Kentucky Horse Park
- Please use "4089 Iron Works Pike" (not "Parkway") as the street address when utilizing GPS and mapping software
- The Kentucky Horse Park is located at 4089 Iron Works Parkway, Lexington, KY 40511, one-half mile east of I-75 off Iron Works Pike (1973) at Exit 120

PARKING

- There is ample general parking on site
- Kentucky Horse Park will charge a \$5 parking fee
- Teams arriving in a school bus or marked vehicle will be admitted at no charge to park
- Buses dropping off participants will unload them on the south side of Alltech Arena (Alltech Way)
- Spaces will be blocked off to allow a bus to drop off participants
- After buses unload, they will proceed to the main parking lot in front of the arena and park in the lower section of this lot
- The bus driver can then be readmitted through the pass gate at the participant entrance (Alltech Way)

LODGING

- Each coach will arrange for lodging for his or her contestants
- The tournament headquarters is the Fairfield Inn and Suites located at 2100 Hackney Place, Lexington, KY 40511

COACHES PACKET PICKUP

- Coaches packets can be picked up at the Participant entrance of the Alltech Arena on Thursday afternoon between 3:00 and 6:00 PM, or when the gates open on Friday

BYLAW 22 REMINDER

- KHSAA Bylaw 22 requires a member of the faculty of the school to be present along with any student-athlete who is representing a member school
- See Bylaw 22 in the KHSAA Handbook if you have any questions

COMPETITION DATES AND SCHEDULE

- A complete timetable is published on the KHSAA website as well as all other necessary information. See the links at the end of these instructions.

ADMISSION INTO VENUE

PARTICIPANTS

- The gates will open for the competitors and coaches ONLY at 7:30 a.m. on Friday and Saturday mornings
- It will be necessary for all coaches and team members to enter the arena on the south side/lower level off of Alltech Way
- We thank you in advance for cooperating
- Competitors entered into the tournament will be admitted if escorted by a coach through the Participant Entrance, including the regional 5th place finisher (alternate who must weigh-in)
- Coaches: Each school will receive coaching credentials for admission for use by the coaches
- The number of credentials will match the Coaches listed in their school's personnel data base, on the KHSAA website
- These must be worn at all times
- There will be no replacement for lost coaching passes
- For Coaches to be mat side, proper credentials are required to be worn at ALL times

GENERAL PUBLIC/FANS/NONPARTICIPANTS

- An all-tournament two (2) day pass will be available at the gate for \$30, and will be sold through Saturday morning
- Tickets will be priced at \$20 for a one (1) day pass
- Tickets for nonparticipants may be purchased at the time you pick up your Coaches Packet at the Thursday afternoon check-in session only
- Separate instructions for advanced online tickets will be forthcoming
- All individuals entering the arena will need to be ticketed or admitted via the pass gate
- The gates will open for the general public at 8:30 a.m. on Friday & 8:00 a.m. on Saturday
- Please inform your parents and non-competing squad members about this timetable
- We are unable to secure the building and provide adequately enough for the safety of these individuals until the staff becomes available when the gates open

COOLERS

- Coolers cannot be brought inside of Alltech Arena
- Athletes will be admitted with their gym bags, and unless identified as a security concern, these bags will not normally be subject to search
- Team coolers can be kept in the Participant Hall area, next to the check-in desk, but NOT in the stands
- For fans and other individuals, coolers and other things used to transport food may NOT be brought inside
- Please keep in mind that this is an Association ruling, and is necessary for insurance and liability reasons

T-SHIRT SALES/DISTRIBUTION (NON-KHSAA SALES)

- There will be no sale or distribution of t-shirts or any other type of athletic apparel on-site, except by approved KHSAA vendors

BEDDING

- Air Mattresses or other forms of "bed rolls" will not be permitted in Alltech Arena

VENUE LOGISTICS

OFFICIAL SCALES AND WEIGH-INS

- Each weight class will not receive any additional growth allowance after the regional tournament
- Each weight class will have a one-pound growth allowance added after day one of state competition

DAY ONE

- The official weigh-ins will begin at 8:00 a.m. on Friday morning, February 17
- In accordance with the playing rules, the scale will close for each weight class when the first competitor of the succeeding class weighs in
- The scales will close promptly after the last 285/287 person weighs in
- Make sure your travel plans coincide with this schedule
- In accordance with National Federation Rules, all athletes should be prepared to weigh-in at 8:00 a.m.

DAY TWO

- The official weigh-ins will begin at 8:00 a.m. on Saturday morning, February 18
- In accordance with the playing rules, the scale will close for each weight class when the first competitor of the succeeding class weighs in
- The scales WILL CLOSE PROMPTLY after the last 285/287 person weighs in
- Make sure your travel plans coincide with this schedule
- In accordance with National Federation Rules, all athletes should be prepared to weigh-in at 8:00 a.m.

PARADE OF CHAMPIONS

- At approximately 9:00 a.m., wrestlers will assemble in the staging area for the Parade of Champions
- Complete instructions for the parade will be provided to the coaches prior to the event

CONDUCT OF EVENT

BRACKETS

- The KHSAA will not be providing printed copies of the brackets to coaches
- A complete set of tournament brackets will be available online in advance of the championship online

SCOREBOARDS

- Again this year, we have been able to secure eight score clocks for the tournament
- Their inclusion makes the tournament more enjoyable for coaches, wrestlers, and fans alike and we sincerely appreciate the advertisers who make their usage possible
- We will again make every effort to keep results posted on the video board in the end zone
- In addition, updated scoring will be available via KHSAA.org

RULES POINTS OF EMPHASIS

ENTRIES AND RESULTS

- The base draw by position will be posted to the KHSAA website, not later than 11 a.m. on Monday, February 13th
- The draw will be a blind draw with the 1st place from each region drawing a 4th place from another region
- These first place competitors cannot draw the 4th from their own region, nor can they be placed in the same bracket with the runner-up from their region
- The 2nd place competitors cannot draw the 3rd from their own region
- As soon as possible and practical, the regional results and state tournament entries will be up on the KHSAA website, and we will also put the results of the state meet up as soon as possible afterwards
- Plans are to have the individual brackets posted by Tuesday at noon
- We will be using TrackWrestling.com for our tournament results, which will be linked through the KHSAA website

ATHLETES UNABLE TO COMPETE

- Should a school have an athlete finish 1-4 in the region and he/she is unable to compete in the state tournament due to schedule conflicts, injury or other documented reason, school representatives shall notify the KHSAA by noon on Thursday, February 16, 2017
- Failure to properly notify the Association of such a withdrawal will result in a penalty against the school in accordance with KHSAA Bylaw 27
- In the case of an athlete being unable to enter and being replaced, the remainder of the bracket will be "rolled-up", and the replacement wrestler seeded fourth
- If a bracket position is vacated and unable to be filled by an alternate from the region, the option will roll in random order to another region
- The random order will be determined and announced by the Association and posted on the website
- Coaches are advised to weigh-in any fifth place regional wrestler in case of replacement the day of the tournament

HEALTH INFORMATION

ATHLETIC TRAINER

- Athletic Training services will be provided for participating teams during this event by the University of Kentucky Sports Medicine
- Athletic Training Staff will be available beginning one hour prior to each session and remain available throughout the day
- Schools are reminded that they are responsible for ensuring that the parental permission to seek medical treatment is authorized from each participant
- The Principal, Athletic Director and/or the Head Coach can use a copy of KHSAA Form GE04 (the physical exam form) for this purpose, as this form contains appropriate language, and should bring that form for each athlete

VENUE SAFETY

- Persons who attend KHSAA events may be injured as a result of the risks inherent in being a spectator at such events
- Attendance at events is a vital family and community based activity which is encouraged
- Please advise KHSAA or venue personnel of any situation you encounter which you or a squad member feels should be addressed to minimize risk to all involved

EMERGENCY ACTION PLAN

- Safety Tech EMT services will be on-site for this event
- In the event of injury or illness to any competitor, the injured person(s) will be transported to Georgetown Community Hospital, Good Samaritan Hospital or the A. B. Chandler Hospital at the University of Kentucky
- KHSAA Staff will, in consultation with Safety Tech EMT and the Athletic Training Staff and Venue personnel, develop an Emergency Action Plan for this event
- This plan will be available upon arrival on-site from the Athletic Training Staff

STATE EVENT OFFICIALS

- Officials presiding over the event are licensed and assigned by the Kentucky High School Athletic Association

SPORTSMANSHIP

- The Kentucky High School Athletic Association requires officials to enforce sportsmanship rules
- High School Athletics emphasize positive values
- All parties have worked hard to create a sense of teamwork, respect, responsibility and perspective
- We remind you that officials expect good behavior and will quickly penalize misconduct
- We encourage and appreciate your help

- Let this competition reflect mutual respect among all participants and officials

MEDIA, CORPORATE, TV, RADIO, WEBCAST, TRADEMARKS

SCHOOL MEDIA

- Each school is permitted one (1) school media pass at KHSAA State Championship events, valid only for a full-time staff member or a student for the sole purpose of reporting the events and for taking non-commercial pictures for yearbooks, school publications, etc.
- Outside entities such as professional photographers, videographers or parents may not utilize the school media pass
- This pass must be requested in advance of the start of the event through the online system

TRADITIONAL MEDIA

- Traditional media members (print, TV, radio, online) interested in covering KHSAA State Championship events should apply for credentials through the KHSAA's online system
- Applications should be submitted by the editor or director at each organization
- Freelance photographers will not be granted access to KHSAA events unless the requisite media rights fee is paid

MEDIA RIGHTS FEE

- Freelance/commercial photographers and radio stations interested in originating a broadcast of a KHSAA State Championship event, are subject to a media rights fee
- Information regarding the media rights fee for each event is available through the online credentialing system

TEAM BROADCASTS

- By paying the requisite fee, each school qualifying for a KHSAA State Championship event may designate one (1) radio station or website to originate an AUDIO-only broadcast of each game its affiliated school participates in
- An official representative of the participating school shall designate to the KHSAA which station/website will be permitted to broadcast its game using the online system
- The radio station/website shall then apply for championship credentials through the KHSAA's online credentialing system
- Originating stations/websites will be subject to a media rights fee, which will be outlined through the online credentialing system
- The KHSAA is the only entity permitted to originate or authorize a video broadcast of KHSAA State Championship events

INTELLECTUAL PROPERTY RIGHTS

- The intellectual property, corporate, broadcasting and media rights to the postseason rounds prior to the state finals belong exclusively to the KHSAA, including titling agreements and sponsorships

VIDEOTAPING

- External power sources may not be used by patrons
- Patrons may videotape any portion of this competition from the confines of their defined spectator area but may not in any manner transmit video live through any resource, including personal social media accounts
- Violators are subject to removal

NFHS NETWORK

- No web streaming may be approved for any outlet without the payment of the requisite fee as mandated by the KHSAA/NFHS Network agreement, with the sole exception of a waiver for those schools participating in the School Broadcast Program of the NFHS Network
- The fee schedule will be published annually by the Commissioner's office and is available by contacting the Communications Director

BROADCAST/TELECAST/WEBCAST RIGHTS

- No member school can sign an exclusive agreement for a postseason round (district, region, sub-section, section) without agreement between the schools and approval of the KHSAA Office including full compliance with the restrictions of the NFHS Network and the KHSAA participation in the network
- At all levels of competition during postseason play, control of media access and location at those contests is with the KHSAA
- In general, the management of those rights may be assigned to the manager at the host KHSAA member school for the district, regional and sectional (semi-state) competition
- At all levels of competition, including district, regional, sectional, and state competition in KHSAA sponsored tournaments and meets, managers are encouraged to make allowances for members of the television media to tape the contests at no charge to the media outlet, as long as the taping is for the sole purpose of newscast highlights

EVENT MERCHANDISING

- KHSAA State Championship apparel will be available for sale at the event and online post-event
- TeamIP is the exclusive vendor of championship apparel, please look for their tent at the championship event to purchase memorabilia
- No outside merchandise representative of the event may be produced by any other entity and sold or distributed inside the playing facility

POST EVENT

TROPHIES AND AWARDS

- Trophies and Awards will be given to the top four (4) teams, and to the top eight (8) individuals in each weight class
- The Wrestling Advisory Committee has requested coaches participating in the awards presentations adhere to the following:
 - Wrestlers should stay in the awards area immediately following the conclusion of their medal bout, in order to participate in the Awards Presentation for their weight class
 - One (1) coach for each wrestler should stay in the awards area to assist with the medal presentation to their wrestler, with no other coaches permitted
 - Only properly credentialed media members are permitted to take pictures during the awards ceremony
 - Coaches are not permitted to use cameras or camera phones to take pictures during the Awards presentation
 - The KHSAA has an official event photographer taking professional photos that will be available for purchase on the KHSAA website following the event
- Participation in the awards ceremony is NOT optional and is an expectation for entering the tournament

CHAMPIONSHIP PHOTOS

- The KHSAA pays for professional photography coverage of the event
- Official championship photos of the event will be available for purchase through the KHSAA's online photo gallery within 72 hours of the completion of the event
- Coaches/Parents WILL NOT be permitted to access the floor to take pictures at the awards ceremonies

FINANCES AND EXPENSES

- There is no school reimbursement for this event
- Member schools are responsible for all expenses incurred for participation in this event

IMPORTANT WEB LINKS

- Wrestling Instructions including all brackets and diagrams – <http://khsaa.org/sports/winter/wrestling/>
- Competition Rules - <http://khsaa.org/handbook/competitionrules/wrcompetitionrules.pdf>
- State Schedule - <http://khsaa.org/wrestling/2017/statemeettimetable.pdf>
- Media Credentials - <http://khsaa.org/news-stats-pubs/media-resources/media-credentials/>
- School Media Requests - <http://khsaa.org/si103-school-media-request-form/>
- School Broadcast Radio - <http://khsaa.org/si113-school-broadcast-designated-radio-form/>
- Skin Condition Form - <http://khsaa.org/forms/wr111.pdf>
- Photo Gallery - <http://khsaa.zenfolio.com/>