

Big Ben KHSAA



Oil Pattern Distance:	44 Feet	Reverse Brush Drop:	40 Feet	Oil Per Board:	45 uL
Forward Oil Total:	15.435 mL	Reverse Oil Total:	9.54 mL	Volume Oil Total:	24.975 mL
Forward Boards Crossed:	343 Boards	Reverse Boards Crossed:	212 Boards	Total Boards Crossed:	555 Boards

	Start	Stop	Loads	Speed	Crossed	Start	End	Feet	T.Oil
1	2L	2R	3	14	111	0.0	3.9	3.9	4995
2	9L	9R	2	14	46	3.9	7.8	3.9	2070
3	10L	10R	3	18	63	7.8	15.4	7.6	2835
4	11L	11R	3	18	57	15.4	23.0	7.6	2565
5	12L	12R	3	18	51	23.0	30.6	7.6	2295
6	13L	13R	1	18	15	30.6	33.1	2.5	675
7	2L	2R	0	22	0	33.1	39.0	5.9	0
8	2L	2R	0	26	0	39.0	44.0	5.0	0

Conditioner:
Type In or Select One

TransferType:
Type In or Select One

Forward



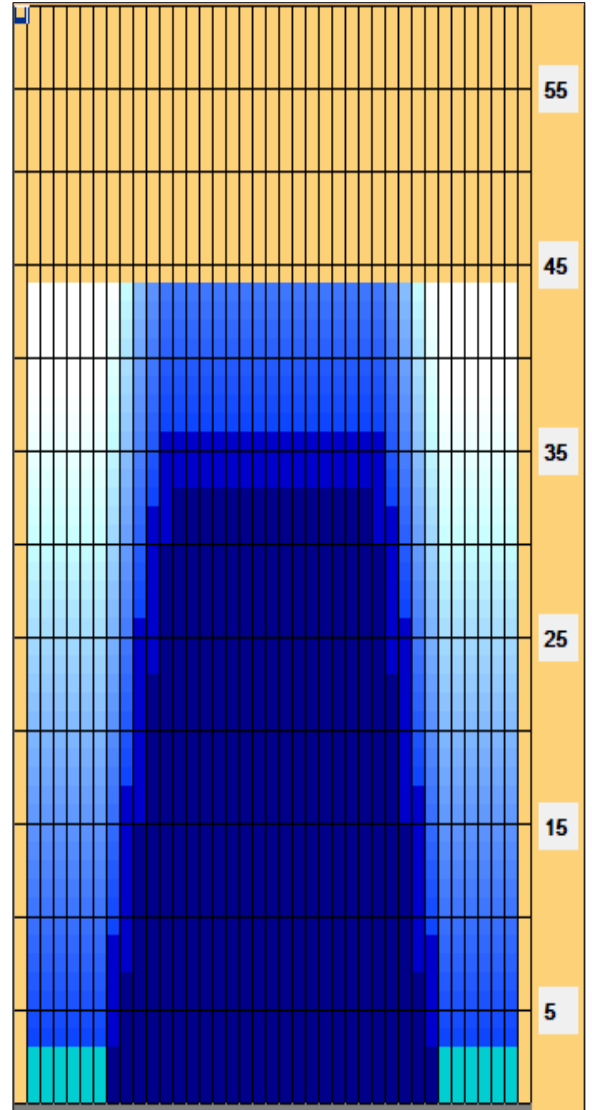
Reverse



Combined



Buff



	Start	Stop	Loads	Speed	Crossed	Start	End	Feet	T.Oil
1	2L	2R	0	30	0	44.0	36.0	-8.0	0
2	12L	12R	1	26	17	36.0	32.4	-3.6	765
3	11L	11R	2	22	38	32.4	26.2	-6.2	1710
4	10L	10R	3	22	63	26.2	16.9	-9.3	2835
5	9L	9R	3	18	69	16.9	9.3	-7.6	3105
6	8L	8R	1	14	25	9.3	7.4	-1.9	1125
7	2L	2R	0	14	0	7.4	0.0	-7.4	0

Tweaked this pattern...F2 changed number of loads from 2 to 1, F5 changed number of loads from 3 to 2. Also, changed drop brush from 44 to 40.

Item	3L-7L:18L-18R	8L-12L:18L-18R	13L-17L:18L-18R	18L-18R:17R-13R	18L-18R:12R-8R	18L-18R:7R-3R
Description	Outside Track:Middle	Middle Track:Middle	Inside Track:Middle	Middle: Inside Track	Middle:Middle Track	Middle:Outside Track
Track Zone Ratio	8.33	1.74	1	1	1.74	8.33

