

2008 Houchens Industries/KHSAA Girls' Sweet 16 - Game Box Score

Rockcastle County Lady Rockets vs. Ohio County Lady Eagles

Date: 03/12/2008 Time: 8:00 pm CST Site: Diddle Arena, Bowling Green, KY Attendance: 4783

Visitors: Ohio County Lady Eagles

##	Name	P	FG	3 Pt	FT	PTS	ORB	DRB	TR	PF	AST	TO	BS	ST	MIN
4	Charley Nolte		0/0	0/0	0/0	0	0	2	2	0	0	1	0	0	1:49
5	* Courtney Albin		2/3	1/7	4/6	11	2	3	5	1	0	5	0	2	30:53
11	* Arielle Keown		3/4	0/5	0/0	6	0	3	3	5	1	2	2	0	15:05
20	* Mariah Robinson		10/20	0/3	4/5	24	4	2	6	4	2	6	0	6	29:56
21	Katie Henderson		1/3	0/0	1/3	3	1	2	3	0	2	1	0	1	13:50
22	Mallory Griffin		0/0	0/0	0/0	0	0	0	0	0	0	0	0	0	DNP
25	Kaley Griffin		0/0	0/0	0/0	0	0	1	1	2	0	3	0	1	10:40
30	Allie Druin		0/0	0/0	0/0	0	0	0	0	0	0	0	0	0	DNP
31	* Jensen Keown		4/7	1/2	3/9	14	3	4	7	5	1	4	0	1	20:53
33	Maegan Snodgrass		0/0	0/0	0/0	0	0	0	0	0	0	0	0	0	DNP
40	Joanna Jurgens		0/0	0/0	0/0	0	1	0	1	1	0	1	1	1	7:35
51	* Olivia Millsaps		1/4	0/0	0/0	2	2	1	3	1	1	0	0	1	22:36
53	Kirsten Barnwell		0/1	0/1	0/0	0	0	0	0	2	0	0	0	0	6:43
10	Sarah Wood		0/0	0/0	0/0	0	0	0	0	0	0	0	0	0	DNP
35	Sabrina Ruby		0/0	0/0	0/0	0	0	0	0	0	0	0	0	0	DNP
	Team						3	2	5						
	<b>Totals</b>		<b>21/42</b>	<b>2/18</b>	<b>12/23</b>	<b>60</b>	<b>16</b>	<b>20</b>	<b>36</b>	<b>21</b>	<b>7</b>	<b>23</b>	<b>3</b>	<b>13</b>	<b>160</b>
	<b>2 PT FG</b>			1st Half	7/12	58.3%	2nd Half	14/30	46.7%	Game	21/42	50.0%			
	<b>3 PT FG</b>			1st Half	2/11	18.2%	2nd Half	0/7	0.00%	Game	2/18	11.1%			
	<b>Free Throws</b>			1st Half	4/8	50.0%	2nd Half	8/15	53.3%	Game	12/23	52.2%			

Home: Rockcastle County Lady Rockets

##	Name	P	FG	3 Pt	FT	PTS	ORB	DRB	TR	PF	AST	TO	BS	ST	MIN
00	* Sarah Hammond		3/7	0/0	2/2	8	5	13	18	4	0	6	2	0	24:56
2	Sarah McKinney		0/0	0/0	0/0	0	0	0	0	0	0	0	0	0	DNP
3	Jackie Alexander		0/1	0/0	0/0	0	0	1	1	0	0	2	0	0	2:05
4	* Mary Saylor		0/4	0/0	0/2	0	0	1	1	2	9	5	0	0	31:05
5	* Katy Mattingly		2/8	1/1	0/1	7	2	2	4	3	0	2	0	3	22:10
10	Kristen Abney		0/0	0/0	0/0	0	0	0	0	0	0	0	0	0	DNP
12	* Sarah Rowe		6/9	1/1	5/8	20	3	2	5	4	1	5	1	2	25:42
14	Nicole Locklear		1/2	0/0	0/0	2	1	2	3	1	0	1	0	0	6:27
15	Sasha Bullock		0/0	0/0	0/0	0	0	0	0	0	0	0	0	0	DNP
21	Jillisa Lay		0/0	0/0	0/0	0	0	0	0	0	0	0	0	0	DNP
23	* Ashley Robinson		2/7	0/0	3/4	7	2	2	4	1	0	1	0	1	25:29
30	Angie Lawrence		2/3	0/2	0/3	4	0	1	1	1	2	3	0	2	13:48
32	Morgan Collins		2/3	0/0	4/4	8	0	0	0	2	2	4	0	1	8:18
20	Chelsey Hensley		0/0	0/0	0/0	0	0	0	0	0	0	0	0	0	DNP
31	Cheyenne Hensley		0/0	0/0	0/0	0	0	0	0	0	0	0	0	0	DNP
	Team						1	3	4						
	<b>Totals</b>		<b>18/44</b>	<b>2/4</b>	<b>14/24</b>	<b>56</b>	<b>14</b>	<b>27</b>	<b>41</b>	<b>18</b>	<b>14</b>	<b>29</b>	<b>3</b>	<b>9</b>	<b>160</b>
	<b>2 PT FG</b>			1st Half	11/27	40.7%	2nd Half	7/17	41.2%	Game	18/44	40.9%			
	<b>3 PT FG</b>			1st Half	1/2	50.0%	2nd Half	1/2	50.0%	Game	2/4	50.0%			
	<b>Free Throws</b>			1st Half	7/10	70.0%	2nd Half	7/14	50.0%	Game	14/24	58.3%			

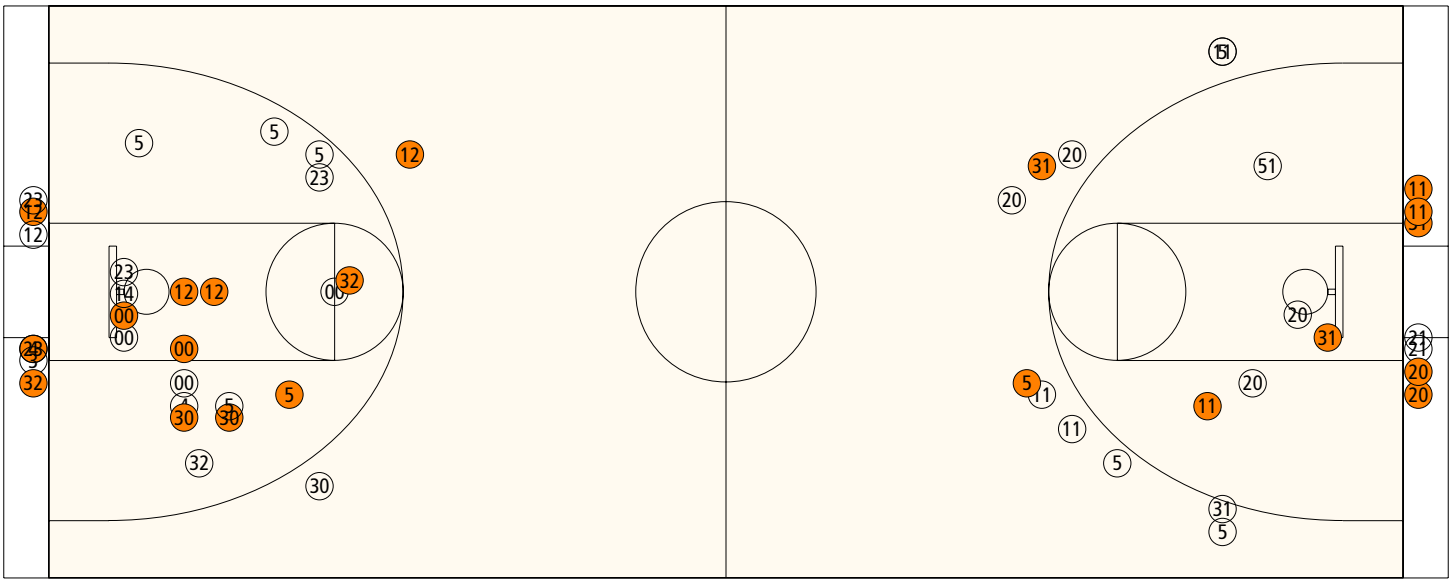
	OHIO	Roc	OHIO	Roc	OHIO	Roc		
Free Throw Pts	12	14	3Pt Points	6	6	Pts/Possession	0.77	0.75
Pts off Turnovers	26	11	2nd Chance Points	19	10	Pts off Bench	3	14
Total Rebounds	36	41	Team Rebounds	5	4	Dead Ball Reb	5	4
Off Rebound %	37.2	41.2	Def Rebound %	58.8	62.8	Total Rebound %	46.8	53.2
3Pt Efficiency	-22.2	+22.7	Def. Stops	49	50	Pts/Shot	0.85	0.93

Technical Fouls: **OHIO** None, **Roc** None  
 Officials: James Pouncy, Sherianne Shuey, Tim O'hara

	Qtr 1	Qtr 2	Qtr 3	Qtr 4	OT 1	OT 2	OT 3	OT 4	Total
<b>Ohio County Lady Eagles</b>	12	12	19	17	0	0	0	0	<b>60</b>
<b>Rockcastle County Lady Rockets</b>	17	15	7	17	0	0	0	0	<b>56</b>

**Largest Lead** Roc 32 OHIO 22 (10 pts) **Lead Changes** 7 **Number of Ties** 7  
**Comments:** None

### FIRST HALF



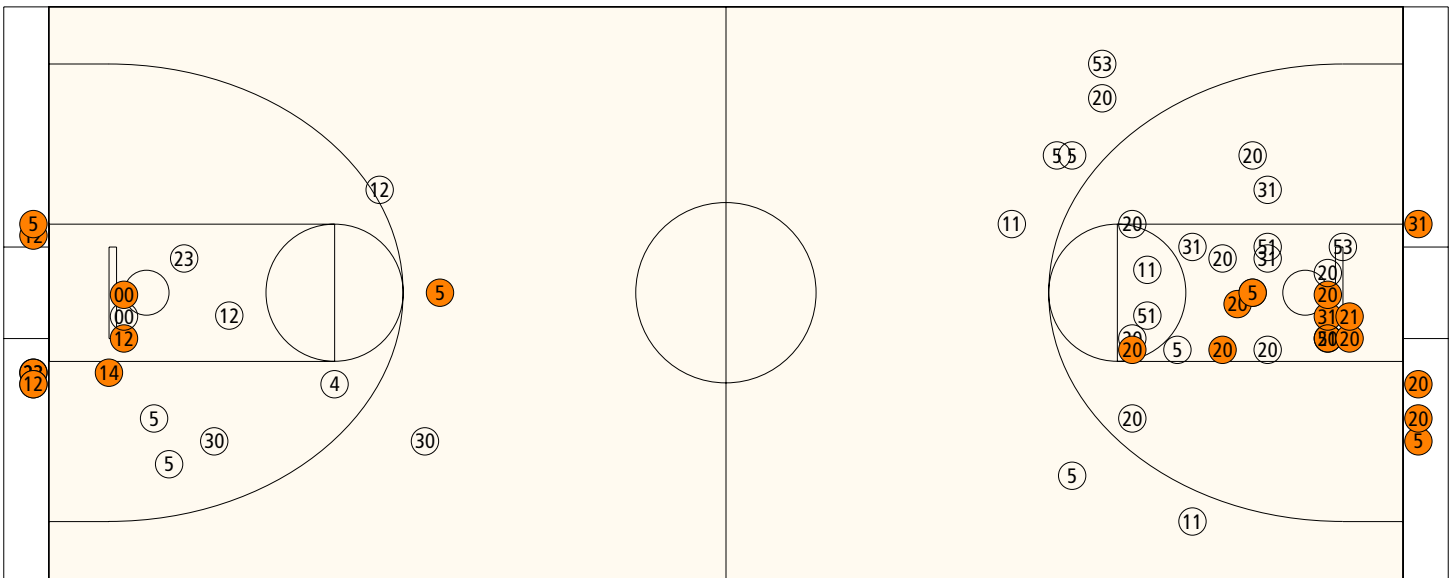
#### Rockcastle County

Shooting	Pts	Pts
2FG 11/27 (40.7%)	22	Pts/Shot 0.94
3FG 1/2 (50.0%)	3	2nd Eff Pts 4
TFG 12/29 (41.4%)		Pts off TO's 10
FT 7/10 (70.0%)	7	3Pt Eff +22.8
Scoring Distribution: 2FG 68.8% 3FG 9.4% FT 21.9%		

#### Ohio County

Shooting	Pts	Pts
2FG 7/12 (58.3%)	14	Pts/Shot 0.89
3FG 2/11 (18.2%)	6	2nd Eff Pts 4
TFG 9/23 (39.1%)		Pts off TO's 9
FT 4/8 (50.0%)	4	3Pt Eff -20.7
Scoring Distribution: 2FG 58.3% 3FG 25.0% FT 16.7%		

### SECOND HALF



#### Rockcastle County

Shooting	Pts	Pts
2FG 7/17 (41.2%)	14	Pts/Shot 0.92
3FG 1/2 (50.0%)	3	2nd Eff Pts 6
TFG 8/19 (42.1%)		Pts off TO's 1
FT 7/14 (50.0%)	7	3Pt Eff +22.5
Scoring Distribution: 2FG 58.3% 3FG 12.5% FT 29.2%		

#### Ohio County

Shooting	Pts	Pts
2FG 14/30 (46.7%)	28	Pts/Shot 0.82
3FG 0/7 (0.00%)	0	2nd Eff Pts 15
TFG 14/37 (37.8%)		Pts off TO's 17
FT 8/15 (53.3%)	8	3Pt Eff -31.1
Scoring Distribution: 2FG 77.8% 3FG 0.0% FT 22.2%		



**2008 Houchens Industries/KHSAA Girls' Sweet 16 - Play by Play Report - Scoring Only (pg 1)**  
**Rockcastle County Lady Rockets vs. Ohio County Lady Eagles**  
**Date: 03/12/2008 Time: 8:00 pm CST Site: Diddle Arena, Bowling Green, KY Attendance: 4783**

Name	Action	Action	Score	Clock	Diff	Name	Action	Action
S Rowe	FG Made		2-0	1 7:48	+2 (L1)			
			2-2	1 7:31	(T1)	J Keown	Putback Made	
A Robinson	Layup Made	M Saylor Assist	4-2	1 6:56	+2			
			4-4	1 6:08	(T2)	J Keown	Layup Made	
			4-7	1 5:07	-3 (L2)	J Keown	3Pt Made	A Keown Assist
S Rowe	FT Made		5-7	1 4:22	-2			
			5-10	1 4:09	-5	C Albin	3Pt Made	M Robinson Assist
S Rowe	FG Made	M Collins Assist	7-10	1 3:53	-3			
A Lawrence	FG Made	S Rowe Assist	9-10	1 3:00	-1			
S Hammond	FG Made	M Collins Assist	11-10	1 2:36	+1 (L3)			
S Rowe	Layup Made		13-10	1 2:01	+3			
A Lawrence	FG Made		15-10	1 1:45	+5			
			15-12	1 0:31	+3	A Keown	FG Made	O Millsaps Assist
K Mattingly	FG Made	A Lawrence Assist	17-12	1 0:14	+5			

**End of Period Summary Lady Rockets 17 Lady Eagles 12**

**Largest Lead: Lady Rockets 5 Lady Eagles 10 (5 pts)**  
**Lead in Period: Lady Rockets 5 Lady Eagles 10 (5 pts)**  
**5 for 2 oppo pts**  
**2 for 0 pts**  
**8/14 for 57.1 %**  
**1/4 for 25.0 %**

**Lead Changes: 3 Ties: 2**  
**Lead Changes: 2 Ties: 2 (this period)**  
**8 for 6 oppo pts**  
**3 for 4 pts**  
**5/13 for 38.5 %**  
**0/0 for 0.00 %**

**Turnovers**  
**2nd Chances**  
**Field Goals**  
**Free Throws**

S Rowe	3Pt Made	M Saylor Assist	20-12	2 7:20	+8			
			20-14	2 6:46	+6	A Keown	Layup Made	
			20-15	2 6:17	+5	M Robinson	FT Made	
			20-16	2 6:17	+4	M Robinson	FT Made	
S Hammond	FT Made		21-16	2 6:10	+5	M Robinson	Personal Foul	
S Hammond	FT Made		22-16	2 6:10	+6			
			22-18	2 5:23	+4	M Robinson	Layup Made	J Keown Assist
			22-19	2 5:17	+3	J Keown	FT Made	
M Collins	FG Made	A Lawrence Assist	24-19	2 4:57	+5			
S Hammond	Putback Made		26-19	2 3:44	+7			
			26-20	2 2:31	+6	K Henderson	FT Made	
M Collins	FT Made		27-20	2 2:29	+7	J Keown	Personal Foul	
M Collins	FT Made		28-20	2 2:29	+8			
			28-22	2 2:22	+6	A Keown	Layup Made	
M Collins	FT Made		29-22	2 2:14	+7			
M Collins	FT Made		30-22	2 2:14	+8			
M Collins	Layup Made	M Saylor Assist	32-22	2 0:50	+10			
			32-24	2 0:22	+8	M Robinson	Layup Made	K Henderson Assist

**End of Period Summary Lady Rockets 32 Lady Eagles 24**

**Largest Lead: Lady Rockets 32 Lady Eagles 22 (10 pts)**  
**Lead in Period: Lady Rockets 32 Lady Eagles 22 (10 pts)**  
**11 for 7 oppo pts**  
**6 for 4 pts**  
**4/15 for 26.7 %**  
**6/6 for 100 %**

**Lead Changes: 3 Ties: 2**  
**Lead Changes: 0 Ties: 0 (this period)**  
**11 for 4 oppo pts**  
**0 for 0 pts**  
**4/10 for 40.0 %**  
**4/8 for 50.0 %**

**Turnovers**  
**2nd Chances**  
**Field Goals**  
**Free Throws**

A Robinson	Layup Made	M Saylor Assist	34-24	3 6:27	+10			
------------	------------	-----------------	-------	--------	-----	--	--	--

**2008 Houchens Industries/KHSAA Girls' Sweet 16 - Play by Play Report - Scoring Only (pg 2)**  
**Rockcastle County Lady Rockets vs. Ohio County Lady Eagles**  
**Date: 03/12/2008 Time: 8:00 pm CST Site: Diddle Arena, Bowling Green, KY Attendance: 4783**

Name	Action	Action	Score	Clock	Diff	Name	Action	Action
S Hammond	Personal Foul		34-25	3	5:44 +9	J Keown	FT Made	
			34-27	3	5:14 +7	O Millsaps	Putback Made	
			34-29	3	5:00 +5	J Keown	Layup Made	M Robinson Assist
			34-30	3	5:00 +4	J Keown	FT Made	
			34-32	3	4:43 +2	M Robinson	Layup Made	
			34-33	3	4:43 +1	M Robinson	FT Made	
			34-35	3	4:20 -1 (L4)	J Keown	Putback Made	
			34-37	3	3:58 -3	C Albin	Layup Made	
			34-39	3	3:13 -5	M Robinson	FG Made	
			34-41	3	2:45 -7	M Robinson	Putback Made	
			34-43	3	2:25 -9	M Robinson	FG Made	
S Rowe	Layup Made	M Saylor Assist	36-43	3	1:57 -7			
A Robinson	FT Made		37-43	3	0:48 -6			
N Locklear	FG Made	M Saylor Assist	39-43	3	0:13 -4			

**End of Period Summary Lady Rockets 39 Lady Eagles 43**

**Largest Lead: Lady Rockets 32 Lady Eagles 22 (10 pts)**  
**Lead in Period: Lady Rockets 34 Lady Eagles 24 (10 pts)**  
**7 for 13 oppo pts**  
**2 for 2 pts**  
**3/8 for 37.5 %**  
**1/2 for 50.0 %**

**Lead Changes: 4 Ties: 2**  
**Lead Changes: 1 Ties: 0 (this period)**  
**2 for 1 oppo pts**  
**8 for 9 pts**  
**8/20 for 40.0 %**  
**3/4 for 75.0 %**

Name	Action	Action	Score	Clock	Diff	Name	Action	Action
K Mattingly	3Pt Made	M Saylor Assist	42-43	4	7:31 -1			
S Rowe	FT Made		43-43	4	7:10 (T3)			
S Rowe	Layup Made	M Saylor Assist	45-43	4	6:43 +2 (L5)			
			45-45	4	6:19 (T4)	M Robinson	Putback Made	
A Robinson	FT Made		46-45	4	6:06 +1			
A Robinson	FT Made		47-45	4	6:06 +2			
			47-47	4	5:40 (T5)	M Robinson	FG Made	
S Rowe	Personal Foul		47-48	4	5:40 -1 (L6)	M Robinson	FT Made	
S Rowe	Putback Made		49-48	4	5:26 +1 (L7)			
			49-49	4	5:16 (T6)	C Albin	FT Made	
			49-50	4	5:16 -1 (L8)	C Albin	FT Made	
			49-52	4	4:36 -3	C Albin	FG Made	
S Rowe	FT Made		50-52	4	4:16 -2			
S Hammond	Putback Made		52-52	4	4:12 (T7)			
			52-54	4	3:59 -2	M Robinson	FG Made	
			52-56	4	3:35 -4	K Henderson	Putback Made	
S Rowe	FT Made		53-56	4	3:27 -3	O Millsaps	Personal Foul	
S Rowe	FT Made		54-56	4	3:27 -2			
			54-58	4	1:02 -4	M Robinson	Layup Made	K Henderson Assist
K Mattingly	Layup Made	M Saylor Assist	56-58	4	0:51 -2			
			56-59	4	0:33 -3	C Albin	FT Made	
			56-60	4	0:02 -4	C Albin	FT Made	

**End of Period Summary Lady Rockets 56 Lady Eagles 60**

**Largest Lead: Lady Rockets 32 Lady Eagles 22 (10 pts)**  
**Lead in Period: Lady Rockets 39 Lady Eagles 43 (4 pts)**  
**6 for 4 oppo pts**  
**4 for 4 pts**  
**5/11 for 45.5 %**

**Lead Changes: 8 Ties: 7**  
**Lead Changes: 3 Ties: 5 (this period)**  
**2 for 0 oppo pts**  
**5 for 6 pts**  
**6/17 for 35.3 %**

No.	Ohio County Lady Eagles	Total FG		3-point		Free throw		Rebounds			F	TP	A	TO	BLK	STL	MIN
		FG	FGA	FG	FGA	FT	FTA	Off	Def	Tot							
4	Charley Nolte	0	0	0	0	0	0	0	2	2	0	0	0	1	0	0	1:49
5	<b>Courtney Albin</b>	3	10	1	7	4	6	2	3	5	1	11	0	5	0	2	30:53
11	<b>Arielle Keown</b>	3	9	0	5	0	0	0	3	3	5	6	1	2	2	0	15:05
20	<b>Mariah Robinson</b>	10	23	0	3	4	5	4	2	6	4	24	2	6	0	6	29:56
21	Katie Henderson	1	3	0	0	1	3	1	2	3	0	3	2	1	0	1	13:50
51	<b>Olivia Millsaps</b>	1	4	0	0	0	0	2	1	3	1	2	1	0	0	1	22:36
31	<b>Jensen Keown</b>	5	9	1	2	3	9	3	4	7	5	14	1	4	0	1	20:53
25	Kaley Griffin	0	0	0	0	0	0	0	1	1	2	0	0	3	0	1	10:40
40	Joanna Jurgens	0	0	0	0	0	0	1	0	1	1	0	0	1	1	1	7:35
53	Kirsten Barnwell	0	2	0	1	0	0	0	0	0	2	0	0	0	0	0	6:43
22	Mallory Griffin	0	0	0	0	0	0	0	0	0	0	0	0	0	0	0	DNP
30	Allie Druin	0	0	0	0	0	0	0	0	0	0	0	0	0	0	0	DNP
33	Maegan Snodgrass	0	0	0	0	0	0	0	0	0	0	0	0	0	0	0	DNP
10	Sarah Wood	0	0	0	0	0	0	0	0	0	0	0	0	0	0	0	DNP
35	Sabrina Ruby	0	0	0	0	0	0	0	0	0	0	0	0	0	0	0	DNP
<b>Team (Included in Totals)</b>																	
<b>Totals</b>		<b>23</b>	<b>60</b>	<b>2</b>	<b>18</b>	<b>12</b>	<b>23</b>	<b>16</b>	<b>20</b>	<b>36</b>	<b>21</b>	<b>60</b>	<b>7</b>	<b>23</b>	<b>3</b>	<b>13</b>	<b>160</b>
Total FG%: 1st half 9 - 23 (39.1%) 2nd half 14 - 37 (37.8%) Game 23 - 60 (38.3%) Deadball 3Pt FG%: 1st half 2 - 11 (18.2%) 2nd half 0 - 7 (0.00%) Game 2 - 18 (11.1%) rebounds FT%: 1st half 4 - 8 (50.0%) 2nd half 8 - 15 (53.3%) Game 12 - 23 (52.2%) 5																	
No.	Rockcastle County Lady Rockets	Total FG		3-point		Free throw		Rebounds			F	TP	A	TO	BLK	STL	MIN
		FG	FGA	FG	FGA	FT	FTA	Off	Def	Tot							
00	<b>Sarah Hammond</b>	3	7	0	0	2	2	5	13	18	4	8	0	6	2	0	24:56
2	Sarah McKinney	0	0	0	0	0	0	0	0	0	0	0	0	0	0	0	DNP
3	Jackie Alexander	0	1	0	0	0	0	0	1	1	0	0	0	2	0	0	2:05
4	<b>Mary Saylor</b>	0	4	0	0	0	2	0	1	1	2	0	9	5	0	0	31:05
5	<b>Katy Mattingly</b>	3	9	1	1	0	1	2	2	4	3	7	0	2	0	3	22:10
12	<b>Sarah Rowe</b>	7	10	1	1	5	8	3	2	5	4	20	1	5	1	2	25:42
23	<b>Ashley Robinson</b>	2	7	0	0	3	4	2	2	4	1	7	0	1	0	1	25:29
30	Angie Lawrence	2	5	0	2	0	3	0	1	1	1	4	2	3	0	2	13:48
32	Morgan Collins	2	3	0	0	4	4	0	0	0	2	8	2	4	0	1	8:18
14	Nicole Locklear	1	2	0	0	0	0	1	2	3	1	2	0	1	0	0	6:27
10	Kristen Abney	0	0	0	0	0	0	0	0	0	0	0	0	0	0	0	DNP
15	Sasha Bullock	0	0	0	0	0	0	0	0	0	0	0	0	0	0	0	DNP
21	Jillisa Lay	0	0	0	0	0	0	0	0	0	0	0	0	0	0	0	DNP
20	Chelsey Hensley	0	0	0	0	0	0	0	0	0	0	0	0	0	0	0	DNP
31	Cheyenne Hensley	0	0	0	0	0	0	0	0	0	0	0	0	0	0	0	DNP
<b>Team (Included in Totals)</b>																	
<b>Totals</b>		<b>20</b>	<b>48</b>	<b>2</b>	<b>4</b>	<b>14</b>	<b>24</b>	<b>14</b>	<b>27</b>	<b>41</b>	<b>18</b>	<b>56</b>	<b>14</b>	<b>29</b>	<b>3</b>	<b>9</b>	<b>160</b>
Total FG%: 1st half 12 - 29 (41.4%) 2nd half 8 - 19 (42.1%) Game 20 - 48 (41.7%) Deadball 3Pt FG%: 1st half 1 - 2 (50.0%) 2nd half 1 - 2 (50.0%) Game 2 - 4 (50.0%) rebounds FT%: 1st half 7 - 10 (70.0%) 2nd half 7 - 14 (50.0%) Game 14 - 24 (58.3%) 4																	

Technical Fouls: None

Attendance: 4783

Officials: James Pouncy, Sherianne Shuey, Tim O'hara

Score by Period	1st	2nd	3rd	4th	Final	Record	Overall	Conf
Ohio County Lady Eagles	12	12	19	17	60	Lady Eagles		
Rockcastle County Lady Rockets	17	15	7	17	56	Lady Rockets		

	Lady Rockets	Lady Eagles		Lady Rockets	Lady Eagles		Lady Rockets	Lady Eagles
Points off Turnovers	11	26	Second Effort Points	10	19	Bench Points	14	3
Points in the Paint	26	34	3 Point Points	6	6	Free Throw Points	14	12
3pt Efficiency	+22.7	-22.2	Points/Shot	0.93	0.85	Defensive Stops	50	49
Largest Lead	32	22 (10 pts)	Lead Changes	7		Number of Ties	7	

Game comments: None