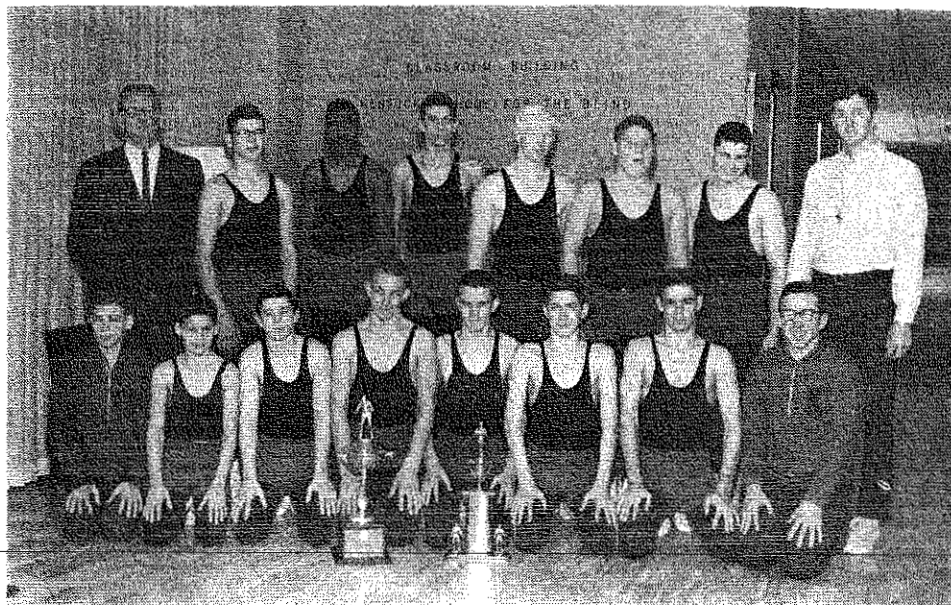


THE KENTUCKY



High School Athlete

THE KENTUCKY SCHOOL FOR THE BLIND
1966 CHAMPIONSHIP WRESTLING TEAM



(Left to Right) Front Row: Earl Jones, Jimmy Whitehouse, Dan Dickerson, Larry Crowe, Virgil Ritchie, Joe Gary Flint, Edward Myers, Joe Triplette. Second Row: Ass't Coach Will D. Evans, Richard Lewis, Grady Curlin, Larry Cook, James Earl Hardin, Earl Wayne Moore, Larry Kerr, Coach W. Edward Murray, Jr.

Official Organ of the
KENTUCKY HIGH SCHOOL ATHLETIC ASSOCIATION

March, 1966

has made many appearances on radio and television. He served from 1962-65 as president of the board of directors of Lexington's United Community Fund. He is a member of the Lexington Kiwanis Club, the boards of the Henry Clay Foundation, The Lexington-Fayette County Foundation, The Citizens Association for Planning in Lexington, and Lexington's Sayre School. In February, 1961, Dr. Lunger was named "Distinguished Brotherhood Citizen" by the Lexington Chapter, National Conference of Christians and Jews.

Listed in **Who's Who in America**, President Lunger is a member of the Governor's Commission on Higher Education in Kentucky and the Commission on Colleges and Universities of the Kentucky Association of Colleges, Secondary and Elementary Schools. He has served on the Commission on Christian Higher Education of the Association of American Colleges, and is a former chairman of the executive committee of the Board of Higher Education of the Christian Churches.

A native of Pennsylvania, Dr. Lunger received his Bachelor of Arts degree magna cum laude from Bethany College, Bethany, West Virginia, where he was a member of Beta Theta Pi Fraternity. He earned the Master of Arts, Bachelor of Divinity and Doctor of Philosophy degrees at the University of Chicago, and had a year of special study at the University of Munich in Germany.

In 1959 Dr. Lunger was awarded the honorary Doctor of Literature degree by Bethany College, and in 1965 the honorary Doctor of Humane Letters degree by the University of Alabama.

STATE TOURNEY TIME

The magic spell is in the air,
The din of battle's near;
The toss, the tip, the shout goes up,
State tourney time is here.
The "Sweet Sixteen" have made the trip
In search of schoolboy fame,
To grab the headline banners bold
Of how to play the game.
From goal to goal along the boards
They bounce the leathered sphere,
Play man to man or in the zone,
Conserve the time so dear.
They sight and fire and pray a bit
To hear the swish of net,
Exult and smile when aim is true,
When not, break out in sweat.
It's madness, yes, but who would trade
This scene for other clime?
There's none to rival old Kaintuck'
When its state tourney time.

By Elmer Kelley
WFMW Radio
Madisonville, Kentucky

STATE WRESTLING TOURNAMENT

The 1966 State High School Wrestling Tournament was held at the Seneca High School, Louisville, on February 11-12. The Kentucky School for the Blind won the tournament with 68 points, one point ahead of the Newport Catholic High School. KSB also had the meet's "Most Outstanding Wrestler" in James Earl Hardin, who won in the 165-pound weight division. Hardin received similar recognition in 1963 and 1965.

The tournament was managed by Wrestling Committee Chairman Orville Williams. It was the third tournament sponsored by the K.H.S.A.A. Sixteen teams participated in the tournament. They finished in this order: 1-Kentucky School for the Blind, 68; 2-Newport Catholic, 67; 3-North Hardin, 58; 4-Bardstown St. Joseph, 53; 5-Seneca, 50; 6-Westport, 36; 7-(Tie) Hopkinsville and Flaget, 31; 9-Fort Campbell, 22; 10-Millersburg Military Institute, 20; 11-Oldham County, 15; 12-Caldwell County, 6; 13-(Tie) Fern Creek and Eastern, 4; 15-Bush, 0; 16-Trigg County, 0.

The KSB team had been coached by W. Edward Murray, Jr., who was assisted by Will D. Evans, a member of the State Wrestling Committee. Mr. Evans had previously served as full-time coach for eight years.

The referees were Larry Quinn of New Albany, Indiana, and Gary Ingraham of Louisville.

Medals were awarded to the first three places in each class. These winners were as follows:

95 lb.—Crawford, North Hardin; Bell, Seneca; Kohn, Ft. Campbell
103 lb.—Dickerson, KSB; Bragg, North Hardin; Monti, Newport Catholic
112 lb.—Gibbons, Hopkinsville; Nieporte, Newport Catholic; Flint, KSB
120 lb.—McKay, St. Joseph; Hillerich, Flaget; Cook, KSB
127 lb.—Crowe, KSB; Donlon, Flaget; McGlone, Newport Catholic
133 lb.—Myledo, North Hardin; Myers, KSB; Howard, St. Joseph
138 lb.—Moore, St. Joseph; Schneider, Newport Catholic; Eldridge, Oldham County
145 lb.—Williams, Seneca; Chilton, Hopkinsville; White, Flaget
154 lb.—Fey, Newport Catholic; Thomas, St. Joseph; Knopf, Oldham County
165 lb.—Hardin, KSB; Shelton, North Hardin; Vold, Westport
180 lb.—Keal, Westport; Schneider, Newport Catholic; Lawrence, Hopkinsville
Heavyweight—Anderson, M.M.I.; Karem Seneca; Goetz, Newport Catholic

O
execut
tucky
the S
have
Kentu
your s
and
KAPC
tion.

pertai
basis
be of
bracke

P
in ma
involv
so, we
vision
Knox
makin
let her
ing to

B
will be
groups
place i
mentic
School
Lexing
second

A
cheerle
night
to tak
pared
to mal
Th
up sch
with t
recogn
way of
leading
curricu

M
scholar
at the
ville. V
the De
ter, ar
cheerle

In
ship t
outstar
need f
must h
two ye