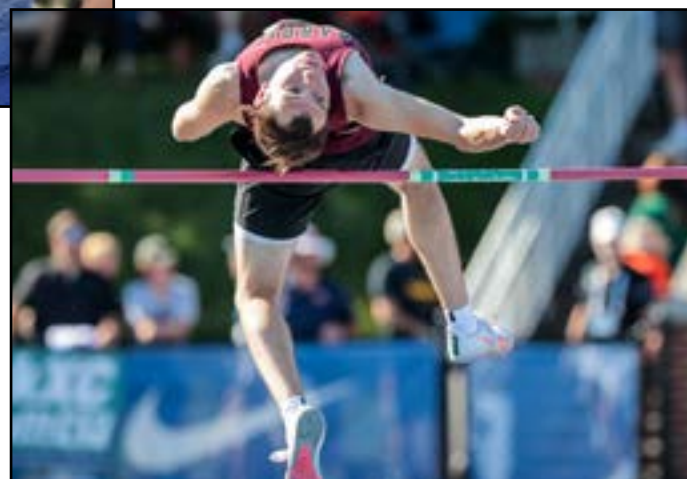




TRACK & FIELD

2023 CLARK'S PUMP-N-SHOP STATE CHAMPIONSHIPS PRESENTED BY UK HEALTHCARE



2023 Clark's Pump-N-Shop State Track & Field Championships Presented by UK HealthCare

Table of Contents

- GENERAL SPRING INSTRUCTIONS FOR ALL SPORT AND SPORT ACTIVITIES 1
- Supersedure Note 1
- Covid-19 Guidance** 1
- Masks/Face Coverings 1
- Competitors 1
- Water - COVID-19 Guidance 1
- Public Health Protocols 1
- Venue Logistics** 1
- Venue Safety 1
- Signage, Balloons and Noisemakers 1
- Pets 2
- Sportsmanship** 2
- Health Information** 2
- Athletic Trainers 2
- Physical Exam Form 2
- Emergency Action Plan 2
- Inclement Weather Procedures 2
- Heat Index Program 2
- Bylaw 22 Reminder** 3
- Requirement to Accompany Team Members 3
- Videotaping, Media and Intellectual Property Rights** 3
- General Media Rights 3
- School Media Credentials 4
- Traditional Media Credentials 4
- Media Rights Fee 4
- Telecast/Webcast Including NFHS Network Restrictions 4
- Music Copyright 4
- Filming 4
- Event Merchandise** 4
- Official KHSAA Championship Photos 5
- TRACK SPECIFIC INSTRUCTIONS** 2
- Brief Welcome** 2
- KHSAA Contacts** 2
- Qualifying for Participation in Championships** 2
- Competition Dates, Location and Schedule** 2
- Dates 2
- Schedule 2
- Inclement Weather Procedures And Schedule 2
- Venue and Address 2
- Ticket Availability and Policies** 4
- Tickets 4
- Fan and Non-Team Member Entry 4
- Clear Bag Policy 4
- Pre-Event Logistics** 4
- Conference Call 4
- Pre-Championship, On-Site Referee Briefing 4
- Practice 4
- Lodging 4
- Parking 4
- Postseason Rosters and Substitutions** 5
- Postseason Rosters 5
- Substitutions/Limitations 5
- Team Admission Into Venue** 5
- Team and Equipment Drop-Off 5
- Team Packets 5
- Athletic Trainers 5
- Participant Entry 5
- Team Party Entry - Non-Participants 5
- Venue Logistics** 6
- Dressing/Locker Rooms 6
- Team Tents/Warm-Up Area 6
- Restricted Areas 6
- Numbers, Entries, Lane Assignments, Scoring** 7

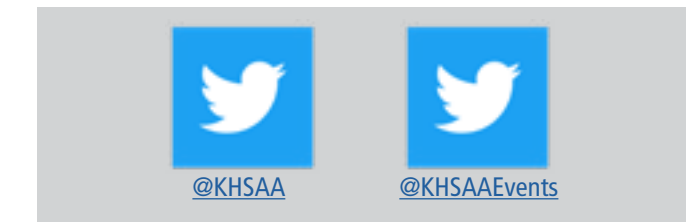
- Numbers 7
- Lost/Misplaced/Replaced Numbers 7
- Individual and Relay Entries 7
- Lane Assignments 8
- Team Score 8
- Scratch Procedure and Penalty 8
- Conducting the Meet** 8
- Reporting for Events 8
- Starting Blocks 8
- Shot and Discus - Common Implements 8
- 4X800 Relay/800 Run 9
- 1,600 Run/3,200 Run 9
- 4X100 Relay/4X200 Relay 9
- 4x400 Relay 9
- Pole Vault Coaching Box 9
- Field Event Qualifying from Preliminaries to Finals 9
- Marshals and Marshalling 10
- Rules/Points of Emphasis/Clarifications/Appeals** 10
- Competition Rules 10
- Wireless Communication 10
- Forms 10
- Appeal Procedure 10
- Appealable Situations 10
- Non-Appealable Situations 10
- State Event Officials** 11
- Post Event** 11
- Results 11
- Trophies and Awards 11
- Finances and Expenses 11
- Important Website Links** 11

Throughout these instructions, portions that are changed due to COVID-19, have been highlighted yellow.

2280 Executive Drive | Lexington, Ky., 40505 | www.KHSAA.org

KHSAA Staff

- Commissioner Julian Tackett
- Associate Commissioner Butch Cope
- Assistant Commissioner Darren Bilberry
- Assistant Commissioner Sarah Bridenbaugh
- Assistant Commissioner Joe Angolia
- General Counsel Chad Collins
- Media Relations and Publications Director Connor Link
- Information Technology Director Rob Catron
- Event Services and Social Media Jenny Elder
- Administrative Assistant/Office Manager Kara Howard
- Administrative Support Specialist Jeremy Ison
- Administrative Support Specialist Jeanie Molloy
- Physical Plant Director Roy Tatum



GENERAL SPRING INSTRUCTIONS FOR ALL SPORT AND SPORT ACTIVITIES

SUPERSEDURE NOTE

The information in these instructions supersedes any information previously distributed, including the Competition Rules. In many cases, these rules have been revised over the last couple of years through the pandemic to the point where time has not permitted complete overhaul and revision of the competition rules. All involved should review items such as tiebreakers and procedures for competition and consider this document authoritative. Contact the primary event contact with any additional questions.

COVID-19 GUIDANCE

The KHSAA's complete "Healthy at Sports, Stage 5 - Partnering for Progress, Guidance for Continued Practice and Competition during the Pandemic" document can be found at the following link: [COVID GUIDANCE](#).

In addition to specific guidance, this document includes guidance for all sports, officials and media. The information in this document should be thoroughly reviewed by all managers, participants and spectators attending a district or regional tournament.

REMINDER - Anyone attending or participating in a KHSAA regular season or postseason event should review their symptoms before arriving. Those that are ill or displaying any symptoms of COVID-19 should stay home.

Some differences in the guidance are necessitated by the differences in sports, facilities and geographic areas, which are pronounced during normal years and magnified this school year.

MASKS/FACE COVERINGS

Masks/Face coverings for non-competitors and the requirements surrounding these items are a matter of local jurisdiction. At minimum, any local or specific mask-requiring ordinance should also include a requirement for managers to post signage and make regular announcements.

COMPETITORS

Due to safety concerns, competitors who are considered to be aerobically exercising should not be required to wear masks during competition.

WATER - COVID-19 GUIDANCE

Coaches and athletes are reminded to bring their own water bottles as no community dispensers can be used.

PUBLIC HEALTH PROTOCOLS

Each member school and event host is expected to adhere to public health standards regarding isolation and quarantine as well as the adopted Return to Play Protocol in the event of a positive test in a participant or team staff member.

The host is responsible for adherence to COVID-19 guidelines in accordance with normal home site procedures.

VENUE LOGISTICS

VENUE SAFETY

Persons who attend KHSAA events may be injured as a result of the risks inherent in being a spectator at such events. Please advise KHSAA or venue personnel of any situation you encounter which you or a team member feels should be addressed to minimize risk to all involved. Any crowd control problems or acts of violence should be brought to the attention of the event staff, which will contact the appropriate authorities. Attendance at events is a vital family and community based activity which is encouraged.

SIGNAGE, BALLOONS AND NOISEMAKERS

Signs/banners are permitted at the facility but must be of good taste and sportsmanship.

Signs/banners must be handheld or attached in a manner not to damage the existing structure.

Signs/banners shall not cover any corporate signage or obstruct the view of patrons.

Amplified noisemakers or items that replicate game management cues are not permitted inside the facility. These items include, but are not limited to: air horns, electronic amplifiers, portable sound systems, instruments that require additional electricity, game clock horns and whistles.

Artificial noisemakers of any kind are not permitted inside the facility per NFHS rules.

Balloons, which can block the view of other patrons, are not permitted at the event.

Only venue provided amplified music is permissible, but only during pre-competition or natural and planned breaks.

PETS

The KHSAA welcomes service dogs utilized by guests with disabilities along with the appropriate documentation or identification. This allowance does not include providing emotional support or companionship but rather specific ADA-related work or tasks.

Service dogs must be harnessed, leashed or tethered at all times, unless special circumstances exist as are defined in federal law, and will be required to rest in the seating area of the individual with a disability, rather than in the aisle.

A guest whose service dog poses a threat to the safety of other guests and employees, or whose dog is not housebroken, may be asked to escort the dog off the premises.

Any service dog that displays vicious behavior towards other guests or employees may be denied entry or removed from the facility.

All other animals are prohibited. This policy is in place regardless of any published information the venue provides on its own signage or message board materials including websites.

SPORTSMANSHIP

The KHSAA requires officials to enforce sportsmanship rules.

High school athletics emphasize positive values and all parties have worked hard to create a sense of teamwork, respect, responsibility and perspective.

We remind you that officials expect good behavior and will quickly penalize misconduct.

We encourage and appreciate your help in letting this competition reflect mutual respect among all participants and officials.

HEALTH INFORMATION

ATHLETIC TRAINERS

The Association will use the services of UK HealthCare to provide trainers for the KHSAA state events.

Athletic Training Staff will be available beginning one (1) hour prior to the event and remain available throughout the day.

PHYSICAL EXAM FORM

Schools are reminded that they are responsible for ensuring parental permission to seek medical treatment is authorized for each participant.

The Principal, Athletic Director or Head Coach can use a copy of KHSAA Form GE04 (Physical Exam Form) for this purpose.

The form contains appropriate emergency treatment permission and should be brought for each athlete at the competition.

EMERGENCY ACTION PLAN

KHSAA staff will, in consultation with the athletic training staff and venue personnel, develop an Emergency Action Plan (EAP) for this event and the plan will be available upon arrival from the athletic training staff.

If an athlete or fan is in need of emergency medical attention, contact the nearest KHSAA staff member, official, UK HealthCare trainer or venue staff so emergency medical services can be reached.

An AED will be located at the team check-in area.

INCLEMENT WEATHER PROCEDURES

In the event of inclement weather, it is the duty of the KHSAA, in consultation with the host facility, to make decisions in regards

to postponement, rescheduling or cancelation, including getting proper notification to all teams, media outlets and schools. Staff will utilize the KHSAA website and Twitter to provide updates as well as an emergency text notification system. KHSAA officials will make every effort to learn the weather forecast prior to the start of competition as the safety of the public and participants will be the most important factor in any decision.

HEAT INDEX PROGRAM

Tournament play will adhere to the KHSAA's Heat Index Program.
Tournament administration will be responsible for tracking and implementing the program's guidelines.
Should the heat index reach 95 degrees, mandatory 10-minute water breaks will be given every 30 minutes.
At 99 degrees, play shall stop, and the heat index will be monitored every 30 minutes.

BYLAW 22 REMINDER

REQUIREMENT TO ACCOMPANY TEAM MEMBERS

You are reminded that KHSAA Bylaw 22 requires a principal, coach or another approved individual of the school to be present along with any student-athlete who is representing a member school.

VIDEOTAPING, MEDIA AND INTELLECTUAL PROPERTY RIGHTS

GENERAL MEDIA RIGHTS

At all levels of competition during postseason play, control of media access and location at those contests is with the KHSAA, and as such, there are necessary policies and restrictions concerning this event and these provisions will be vigorously enforced. The intellectual property, corporate, broadcasting and media rights to all postseason rounds belong exclusively to the KHSAA, including titling agreements and sponsorships.
Control of media access and location at all levels of postseason play is with the KHSAA.
At all levels of KHSAA sponsored postseason events, including district, regional, first round, second round, quarterfinal and state competition, allowances shall be made for television media to record video of the contests, without play-by-play, at no charge as long as the sole purpose is for newscast highlights.
At all levels of KHSAA sponsored postseason events, including district, regional, first round, second round, quarterfinal and state competition, allowances shall be made for other media outlets to be admitted to the contests as long as the sole purpose is for reporting of the actions taking place at the contest and promoting the event.
Participating teams in KHSAA events shall be allowed to record the contest, for coaching purposes only, if space is available with such availability at the discretion of the KHSAA and may be required to sign a waiver indicating that the KHSAA shall be held blameless for any and all liability to those parties involved in the video recording.
Any video recording must not violate existing, acknowledged, written copyright protection or intellectual property agreements and cannot be broadcast in any form, including internet and social media.
If space is deemed available, the KHSAA has the right to designate a specific area for video recording and no video recording will be allowed outside of that area.
The determination of space availability is solely with the KHSAA and shall be equitable for all teams.
A freelance/commercial photographer is any person, including a school employee, not representing an established media outlet or a person who will capture images from the event.

SCHOOL MEDIA CREDENTIALS

Each school is permitted one (1) school media pass at KHSAA State Championship events, valid only for a student or full-time school employee, for the sole purpose of reporting the events for school internal publications.
Space permitting, school media may be granted floor access consistent with traditional media access.
Outside entities such as professional photographers, videographers or parents may not utilize the school media pass.
The school media pass may not be used for taking pictures that will later be sold as these individuals need to apply for a

freelance/commercial photographer pass and pay the requisite fee.
This pass must be requested by a school administrator in advance of the start of the event at credentials.khsaa.org, which is included as a link at the end of these instructions.

TRADITIONAL MEDIA CREDENTIALS

Traditional media members (print, TV, radio, online) interested in covering KHSAA State Championship events should apply for credentials through the KHSAA's online system. A link to the credential application is included at the end of these instructions. The deadline to apply is 3 p.m. the day before competition begins. Applications should be submitted by the editor or director at each organization. Complete information should be submitted for all attendees (including unique email addresses and cell phone numbers), as the KHSAA will use these methods to communicate information surrounding the event. Media outlets may be limited during this event. Freelance/commercial photographers, as defined herein, will not be granted access to KHSAA events unless the requisite media rights fee is paid. KHSAA Media policies are outlined online at - <https://khsaa.org/news-stats-pubs/media-resources/media-credentials/>

MEDIA RIGHTS FEE

Freelance/commercial photographers as defined in these instructions and radio stations interested in originating a broadcast of a KHSAA State Championship event are subject to a media rights fee. Information regarding the fee for each event is available through the online credentialing system.

TELECAST/WEBCAST INCLUDING NFHS NETWORK RESTRICTIONS

The KHSAA is a full member of the NFHS Network and as such, restrictions exist on all postseason levels. A telecast, as used in these instructions, is a video, live or delayed account, including play-by-play, of any contest over the air. A webcast, as used in these instructions, is a video, live or delayed account, including play-by-play, of any contest distributed using the internet. The KHSAA is the only entity permitted to produce live or delayed video from state championship events including first round, second round, quarterfinal and state rounds, and is the sole authority for approval of any other. No entity, unless given prior approval by the KHSAA shall be permitted to produce video telecasts or broadcasts, with the exception of approved media outlets solely recording highlights for news use. No entity, including media members, may stream live video content during postseason events including the use of social media products such as Facebook@ Live. The mandated minimum fee schedule will be published annually by the Commissioner's office on the KHSAA website. For all postseason play, all questions regarding live or delayed broadcast or telecast policies, including requests for approval shall be referred to the Media Relations and Publications Director for approval by the Commissioner.

MUSIC COPYRIGHT

KHSAA schools are reminded to adhere to all music copyright laws.

FILMING

External power sources may not be used by patrons. Spectators may film with a hand-held camera from the spectator area, but may not in any manner transmit live video through any resource, including personal social media accounts. Violators are subject to removal.

EVENT MERCHANDISE

KHSAA State Championship apparel will be available for sale at the event and online at the following link - khsaa.teamip.com. KHSAA State Championship apparel will be available for sale at the event and online post event via the TeamIP link on all pages of the KHSAA website.



2023 State Spring Championship presented by UK HealthCare

TeamIP is the exclusive vendor of championship apparel, please look for their tent at the championship event to purchase memorabilia.

No outside merchandise representative of the event may be produced by any other entity and sold or distributed inside the playing facility.

OFFICIAL KHSAA CHAMPIONSHIP PHOTOS

The KHSAA pays for professional photography coverage of the event.

Official championship photos will be available for purchase through the KHSAA's online photo gallery within 72 hours of the completion of the event, khsaaphotos.org.

TRACK SPECIFIC INSTRUCTIONS	2
Brief Welcome.....	2
KHSAA Contacts	2
Qualifying for Participation in Championships.....	2
Competition Dates, Location and Schedule	2
Dates	2
Schedule	2
Inclement Weather Procedures And Schedule.....	3
Venue and Address	3
Ticket Availability and Policies	3
Tickets	3
Fan and Non-Team Member Entry	4
Clear Bag Policy.....	4
Pre-Event Logistics.....	4
Conference Call	4
Pre-Championship, On-Site Referee Briefing	4
Practice.....	4
Lodging	4
Parking	5
Postseason Rosters and Substitutions	5
Postseason Rosters	5
Substitutions/Limitations	5
Team Admission Into Venue	5
Team and Equipment Drop-Off.....	5
Team Packets	6
Athletic Trainers.....	6
Participant Entry	6
Team Party Entry - Non-Participants	6
Venue Logistics.....	6
Dressing/Locker Rooms.....	6
Team Tents/Warm-Up Area	7
Restricted Areas.....	7
Numbers, Entries, Lane Assignments, Scoring	7
Numbers.....	7
Lost/Misplaced/Replaced Numbers.....	7
Individual and Relay Entries	7
Lane Assignments.....	8
Team Score	8
Scratch Procedure and Penalty	8
Conducting the Meet	8
Reporting for Events.....	8
Starting Blocks	8
Shot and Discus - Common Implements	8
4X800 Relay/800 Run.....	9
1,600 Run/3,200 Run.....	9
4X100 Relay/4X200 Relay	9
4x400 Relay.....	9
Pole Vault Coaching Box.....	9
Field Event Qualifying from Preliminaries to Finals.....	9
Marshals and Marshalling	10
Rules/Points of Emphasis/Clarifications/Appeals.....	10
Competition Rules	10
Wireless Communication.....	10
Forms.....	10
Appeal Procedure	10
Appealable Situations.....	10
Non-Appealable Situations.....	10
State Event Officials	11
Post Event	11
Results.....	11
Trophies and Awards	11
Finances and Expenses	11
Important Website Links	11

TRACK SPECIFIC INSTRUCTIONS

BRIEF WELCOME

Congratulations on behalf of the Kentucky High School Athletic Association Board of Control and staff for advancing to the 2023 Clark's Pump-N-Shop State Track & Field Championships presented by UK HealthCare.

Refer to this manual and the important website links included at the end of the document to guide you through preparation for your participation.

KHSAA CONTACTS

The primary contact for track & field is Assistant Commissioner Sarah Bridenbaugh (sbridenbaugh@khsaa.org).

If Mrs. Bridenbaugh is for some reason not available, Assistant Commissioner Darren Bilberry (dbilberry@khsaa.org) is the backup contact.

Tim King will serve as the State Meet Director and Head Rules Official, and can be reached via email at teejayking@gmail.com or by cell at 859-653-5907.

They, along with Event Services and Social Media Director Jenny Elder (jelder@khsaa.org), can assist you as needed.

Media inquiries should be directed to Media Relations and Publications Director Connor Link (clink@khsaa.org), who will be on site throughout the event.

Questions may also be directed to the KHSAA offices at (859) 299-5472 and any member of the staff should be able to refer you to the correct party.

QUALIFYING FOR PARTICIPATION IN CHAMPIONSHIPS

The state meet shall include:

- The top two (2) competitors in each event at the seven (7) region meets per class shall automatically qualify for the state meet.
- The next 10 best times/heights/marks from the state at-large per class shall automatically qualify for the state meet.

For Unified events, the state meet shall include:

- The top two (2) competitors in each event at the seven (7) region meets per class shall automatically qualify for the state meet.
- The 10 next best times/heights/marks from the state-at-large per class shall automatically qualify for the state meet.

For the Adapted events, the state meet shall include:

- The top two (2) adapted athletes in each event at the seven (7) region meets per class shall automatically qualify for the state meet.
- The 10 next best times/heights/marks from the state-at-large per class shall automatically qualify for the state meet.

There is no additional, formal entry process for individual or team state qualifiers as regional results shall serve as entries for the state championships.

COMPETITION DATES, LOCATION AND SCHEDULE

DATES

The 2023 Clark's Pump-N-Shop State Track & Field Championships presented by UK HealthCare will take place June 1-3 at the Outdoor Track & Field Complex on the University of Kentucky campus in Lexington.

- Class 1A will compete on Thursday, June 1.
- Class 2A will compete on Friday, June 2.
- Class 3A will compete on Saturday, June 3.

SCHEDULE

Gates will open for teams at 7:30 a.m. ET and for the general public at 8 a.m., on all three (3) days of competition.

A complete time schedule for the championships is included as a link at the end of these instructions.

See the inclement weather section for other guidance in case these situations occur.

INCLEMENT WEATHER PROCEDURES AND SCHEDULE

Should it begin to rain without lightning or thunder, the meet will continue on schedule, unless the head official determines that it is unsafe to continue.

The Head Meet Official must delay or interrupt a competition at the first sight of lightning or sound of thunder and the site should be cleared of all persons immediately by event administration.

If it is anticipated that the storm will pass, the competition may resume following a 15 minute warm-up period, no sooner than 30 minutes after the last sight of lightning or sound of thunder.

In the event of inclement weather which forces postponement or interruption of the meet, it is the duty of the KHSAA to make decisions in regard to resumption, postponement, rescheduling or cancelation, including getting proper notification to all teams, media outlets and schools.

Staff will utilize the KHSAA website and Twitter to provide updates as well as an emergency text notification system.

Should weather force a postponement or delay, teams and fans should immediately leave the bleacher area and team area upon hearing the announcement.

Should evacuation of the track be necessary, directions will be given by uniformed officers, as well as meet officials.

Other facilities at the University of Kentucky are available as emergency shelter or individuals can seek refuge in the parking garage or in individual or team transportation.

Should the meet be suspended and a decision made to resume, the following procedure will be utilized:

- If and when the decision is made to resume, uniformed officers and meet officials will circulate through the parking lots and a PA announcement will be made.
- There will be a 15-minute warm-up and waiting period prior to the first call for the first resumed event.
- Once the first event has begun, the meet may continue on a rolling schedule based on the circumstances at the time.

If the severe weather is of great length or intensity, the Games Committee (The Commissioner, designated KHSAA Staff and senior meet management) have the responsibility and authority to resume, postpone or cancel the competition.

If the decision is made by the Commissioner to cancel the meet, it shall be considered to be complete and scoring finalized through all events in which final results have been recorded.

The safety of the public and participants will be the most important factor in any decision.

Due to the unpredictable nature of weather or other unforeseen circumstances, event times are tentative and subject to change.

VENUE AND ADDRESS

[UK Outdoor Track & Field Complex](#)

[698 Sports Center Dr., Lexington, Ky., 40506](#)

TICKET AVAILABILITY AND POLICIES

TICKETS

All tickets will be sold online via GoFan, the KHSAA's official digital ticket vendor, available through khsaatickets.org.

General admission ticket prices with no re-entry privileges are, \$13

General admission ticket prices with re-entry privileges are, \$16

- A wristband will be provided at the gate for those that choose the re-entry option.
- Re-entry privileges will only be given to fans that purchase the "all-access" ticket and are wearing the provided wristband.

Kentucky Children's Hospital is sponsoring FREE tickets for all children 5-and-under. To receive these tickets, you must "purchase" these seats through khsaatickets.org even though there will be no charge,

Fans should purchase their tickets before they arrive at the venue to facilitate entry and minimize waiting.

There will be no paper tickets sold or cash sales at the walk-up gate.

Any on-site transactions will be digital using the personal devices of the customer or equipment provided by the KHSAA.

No screenshots of tickets shall be honored at any time.

GoFan's training page for buying and sharing tickets is included as a link at the end of these instructions.

Please see the policy in these instructions related to service animals and their allowances.

FAN AND NON-TEAM MEMBER ENTRY

All spectators must enter and exit through the admission gate which will open one (1) hour prior to the start of each game.

Keep in mind, the time may vary if previous game is not complete.

During the game, there will be no re-entry without the purchase of a new ticket.

Everyone must enter and exit through the admission gate, which opens at 8 a.m. ET each day.

Only the Commonwealth ID Card issued by the KHSAA office for Athletic Directors and Principals will be accepted for admission to the event.

Administrators with the Commonwealth ID card can check-in at the team check-in tent.

No coaches' cards, or officials' ID cards will be honored at any gate.

Complimentary admission is not provided for college coaches or scouts.

Fans may not enter or re-enter via the team check-in gate.

CLEAR BAG POLICY

UK Athletics utilizes a clear bag policy for all UK home facilities. Policy information can be found at ukathletics.com/clearbag.

PRE-EVENT LOGISTICS

CONFERENCE CALL

There will be a web conference via Zoom for participating coaches and athletic directors at 9 a.m. ET on Tuesday, May 30.

Additional instructions regarding the call will be sent via email once the field is set.

Participants can set up from any location to join the conference and are encouraged to join by computer to view pertinent information, maps, etc.

PRE-CHAMPIONSHIP, ON-SITE REFEREE BRIEFING

There will be a short, voluntary briefing with the head referee prior to the start of each meet on the back stretch.

While this is not mandatory, it is an opportunity for coaches to ask questions.

Only the head coach is to attend this meeting.

The head referee will be available for consultation at the time and place listed on the state event schedule.

This briefing is solely for the purpose of inquiries and clarifications.

Any questions regarding legality shall be resolved prior to the start of the meet.

This will be the only track access granted to coaches as it will be cleared prior to the first event.

Select meet officials will have a mandatory meeting with the Meet Director and Assistant Commissioner. Those involved will be notified of the time and place.

PRACTICE

The track will open for warm-ups at 8:15 a.m. ET all three (3) days.

There will be NO practice time or day for the state track & field meet prior to the date of competition for each class.

LODGING

Schools will arrange lodging for their participants if needed and are responsible for all travel expenses, including lodging, for

participation in the event.

Have your school's or Board of Education's Sales Tax Exempt Number with you at check-in to avoid sales tax from being added to the hotel bill.

Hotels with special rates for state participants have been identified by the Lexington Convention and Visitors Bureau.

Teams can access these prices by making the property aware that the individual is representing a school involved in the State Track and Field Championships.

A listing of these hotels potentially offering reduced rates is included as a link at the end of these instructions.

PARKING

All parking regulations, including towing, will be enforced by the University of Kentucky Parking office.

Parking will be on your own and limited near the facility as there are no reserved spots.

Parking for spectators is available in the parking garage located on Sports Center Drive (there will be a fee on Thursday & Friday only), and be aware that the collection of this fee upon exit may slow departure.

Parking for spectators is available, without a fee, at Kroger Field for the entirety of the meet. There will be a shuttle running throughout the day for those that have mobility issues and for drivers of team transportation.

Remind your fans to be prepared for a short walk to the track complex.

Accessible parking is available in lot E immediately next to the track and below the old baseball facility. This lot will be controlled to prevent unauthorized access.

Parking for buses will be available in the Kroger Field lot only with attendants there to help drivers assure they are in the correct spot.

Team buses must follow the bus route map provided at the link at the end of these instructions.

Buses may drop off teams by using Sports Center Drive, loop through the small parking lot, and then follow the map to move to the football stadium to park.

Once buses are parked, there is a provided shuttle back to the track complex and bus drivers will check-in at the same tent as teams for admission.

POSTSEASON ROSTERS AND SUBSTITUTIONS

POSTSEASON ROSTERS

Schools have previously logged into the KHSAA website and designated the postseason roster, which is separate from the regular-season varsity roster.

Roster revisions had to be made before the first date of the postseason when online rosters were closed and considered final.

Only student-athletes appearing on the school's postseason roster as of the first date of the postseason are eligible to participate in any round.

The online, postseason roster, may be printed from the KHSAA website as the valid listing of available participants.

This roster information is also used for advance preparations for state qualifying teams and individuals.

SUBSTITUTIONS/LIMITATIONS

There are no substitutions at the state meet.

TEAM ADMISSION INTO VENUE

TEAM AND EQUIPMENT DROP-OFF

Bus drivers may drop off teams and equipment outside of the track & field complex using the bus route map.

Ensure your driver has a copy of the map to understand where to drop off teams.

A link to the bus route map is provided at the end of these instructions.

TEAM PACKETS

Coaches must pick up their team packets on the day of their respective class' meet.

No packets will be distributed early. The check-in gate opens at 7:30 a.m. ET each day and early arrivals will be held outside of the gate.

Packets will contain the following:

- Competitor numbers with pins
- Meet schedule
- Track map
- Coaches' passes (wristbands), the total number of participants determines the number of coaches passes.
 - o 14 or less: maximum of three (3) coaches passes
 - o 15-19: maximum of four (4) coaches passes
 - o 20 or more: maximum of five (5) coaches passes
 - o In addition, Unified/Adapted coaches passes will be issued if the school has additional Bylaw 25 certified coaches in the database and have qualified competitors.

Coaches are to distribute competitors' numbers and coaches' passes outside of the facility to prevent ingress issues for other teams.

ATHLETIC TRAINERS

Any school athletic trainers must be pre-approved by the KHSAA. Send name, email address and cell phone number to Assistant Commissioner Sarah Bridenbaugh, sbridenbaugh@khsaa.org prior to the meet for approval.

PARTICIPANT ENTRY

Participants will be granted complimentary admission at the team check-in gate and do not require a digital ticket.

The only entry and re-entry access for participants will be at the team check-in gate.

Each state qualifier will be issued a competitor number, including alternates.

Contestants are responsible for maintaining these numbers at all times.

State track & field competitors must show their number at the team-entry gate for admission without charge and only during their respective class' meet.

Competitors will NOT be admitted through the public ticket gate, even with their numbers.

Team members outside of the numbered, participating athletes in the state meet must purchase a ticket in advance through GoFan through khsaatickets.org and enter through the main ticket gate.

TEAM PARTY ENTRY - NON-PARTICIPANTS

Coaches must be listed on the KHSAA school page and have completed all of the Bylaw 25 coaching requirements to receive a pass.

The only entry and re-entry access for team-party members will be at the team check-in gate.

Only the Commonwealth ID Card issued by the KHSAA office for Athletic Directors and Principals will be accepted for admission to the event. Administrators with the Commonwealth ID card can check-in at the team check-in tent.

VENUE LOGISTICS

DRESSING/LOCKER ROOMS

Locker room access is not provided on-site.

Participants should arrive at the venue dressed and ready to compete.

TEAM TENTS/WARM-UP AREA

The only area for team tents will be in the designated area referred to as "tent city," which is on the far side of the track from the ticket gate and houses a warm-up track.

Schools may NOT set up their tents ahead of time or in any other location. They must wait until the facility is open for team check-in.

It is especially important that teams clean up their area at the conclusion of their meet.

Teams are not to bring personal, portable sound systems into any area of the facility, including tent city.

Only competitors with numbers and coaches with proper credentials shall be admitted to tent city.

Any team coolers must come through the team gate as no coolers will be permitted through the general public entrance.

Tents will not be allowed in the facility for spectators.

RESTRICTED AREAS

Maps and diagrams are posted on the KHSAA website and included as a link at the end of these instructions defining zones and areas for team members, coaches, officials, etc.

No runners are allowed on the track after events begin, except during the designated warm-up periods and at the awards tent when needed.

Block holders for individual competitors will not be allowed, and block holders of any type will only be allowed on the track in situations where it is determined necessary by the starter.

Competitors will not be allowed to have non-participating athletes accompany them to field event areas.

Coaches will not be granted access to the track as only athletes and officials will be given access.

NUMBERS, ENTRIES, LANE ASSIGNMENTS, SCORING

NUMBERS

Numbers shall be worn on the front of uniforms in running events.

Numbers shall be worn on the front of uniforms in field events, except for the high jump and pole vault.

The field event chief will direct placement in the high jump and pole vault.

Athletes must keep their number if they exit the facility and expect to re-enter.

Hip numbers shall be worn as directed by the clerk in select events and will be distributed at the clerking station.

LOST/MISPLACED/REPLACED NUMBERS

There will be a charge for authorized replacement numbers equal to a general admission ticket.

In the case of a lost number, athletes/coaches will be required to complete a form at the team check-in gate.

KHSAA staff will confirm the athlete has events remaining as replacement numbers will not be issued to eliminated/disqualified participants.

Upon verification, KHSAA staff will sign the form authorizing replacement and alert admission personnel to admit the athlete.

Once signed, the form is to be brought to the press box for re-issue.

INDIVIDUAL AND RELAY ENTRIES

Only teams and individuals that have qualified at a regional meet will compete at the state meet.

Coaches with a qualified relay team will have already submitted the names of possible competitors prior to the regional meet.

Eight (8) participants were able, prior to the regionals, to be named to a relay team and any four (4) of whom may be used at state.

Relay competitors may only come from the competitors listed at the region (maximum eight (8) per relay), including alternates.

There shall be no additional alternates after completion of the regional meet.

When relay teams check in with the Clerk of Course, the clerk will mark the competitors that the coach chooses from the available listing.

Only those relay contestants selected to participate and reporting will be considered official entries.

Relay competitors do not need to be the same from the regional meet to the state meet.

LANE ASSIGNMENTS

Lane assignments will be posted to the KHSAA website the week of the state meet.

The standard order of events will be followed from the Rule Book with the fastest section running last.

The 4x800 relay and 800-meter run will be completed in two sections with 14 athletes entered in the faster section and 10 in the slower section.

The 100/110 Hurdles, 100 Dash, 4x200 Relay, 4x100 Relay, 400 Dash, 300 Hurdles, 200 Dash and 4x400 Relay will be run in three (3) sections, with the two (2) fastest sections using all available lanes.

The 1,600- and 3,200-meter runs will be completed in one race each.

The Games Committee (The Commissioner, designated KHSAA staff and senior meet management) may alter these provisions in the case of an inclement weather emergency.

TEAM SCORE

At the state championships, all individuals or relays placing eighth (8th) or higher in each event shall score team points.

A team's score shall be determined by totaling the points earned by the top-eight finishers using a 10-8-6-5-4-3-2-1 scale.

SCRATCH PROCEDURE AND PENALTY

There is no penalty for athletes scratching from events after the meet starts, or for athletes failing to finish an event once they are entered.

There will not be a roll-up of athletes into the state meet if athletes are scratched.

Scratched athletes will result in an empty lane in that event.

CONDUCTING THE MEET

REPORTING FOR EVENTS

Competitors are to report to the gate area in tent city on the first call to their events.

Competitors are to report to the clerk area equipment building (near tent city) on the second call to their events.

Participants will then be escorted to the starting line or the field event area.

Attendants shall not accompany a competitor to the starting line or during the race.

State meet contestants should allow plenty of time to report for their events as no start times will be delayed to allow for the arrival of an athlete.

STARTING BLOCKS

All races where the first leg (or entire race) is 400 meters or less shall use starting blocks.

Starting blocks will be provided by the University of Kentucky.

For the few schools that continue to utilize Moyer starting blocks, this is legal and has been approved by the Games Committee (The Commissioner, designated KHSAA Staff and senior meet management).

If a school desires to use the Moyer block, the athletes/school must provide those blocks and they must be approved by the Meet Director prior to usage.

There shall be no block attendants allowed unless the starter deems them necessary within the rules.

SHOT AND DISCUS - COMMON IMPLEMENTS

In addition to the common implements provided by the KHSAA, athletes may use their own implements at state, provided they

pass inspection.

If an athlete weighs in his/her implement, it then becomes a "common" implement and may be used by any athlete in the competition.

If an athlete misses the weigh-in/inspection period of their implement, they must use a common implement provided by the KHSAA or another athlete.

Illegal implements will be marked and impounded. Coaches will be notified so they can reclaim the items at the conclusion of the event.

All shots and discuses shall be weighed prior to the competition.

The KHSAA will have a legal shot and discus available for use by competitors in case they do not have their own or if his/her implement would fail inspection.

4X800 RELAY/800 RUN

The 4x800 meter relay and the 800-meter run will use a staggered start with a one-turn stagger.

Athletes may break to the inside at the start of the back stretch of the track.

Lapped runners shall run a normal course if permitted to continue in the race.

Participants may use tape on the track, but shall remove all tape after the event.

1,600 RUN/3,200 RUN

The 1,600- and 3,200-meter runs shall utilize a one-turn stagger with the runners breaking to the inside of the track at the start of the back stretch.

Lane assignments for both races will utilize the same format for starting listed above for the 3,200-meter relay and 800-meter run.

Lapped runners shall run a normal course if permitted to continue in the race.

4X100 RELAY/4X200 RELAY

The 4x100 meter relay and 4x200 meter relay will be ran in lanes for the duration of the race.

Participants may use tape on the track, but shall remove all tape after the events.

4X400 RELAY

The 4x400 meter relay will be completed with a three-turn stagger.

The first leg will be ran in lanes for the entire distance.

The runners of the second leg in the 4x400 relay shall be free to take over any position on the track after the curve at the entrance to the back straightaway, which is marked with a broken line and cones.

The third relay exchanges, referred to as the "California Exchange," shall be used thereafter until the completion of the event.

Participants may use tape on the track, but shall remove all tape after the event.

POLE VAULT COACHING BOX

A coaching box/designated area will be provided for Pole Vault Coaches to communicate with athletes per NFHS Track Rule 3-2-4(g).

This coaching area will be provided outside of the track and bordering fence, and marshalled to ensure that coaches can communicate with athletes between trials per the NFHS rules allowances.

FIELD EVENT QUALIFYING FROM PRELIMINARIES TO FINALS

The order of competition in the throwing and jumping events will be set so the top qualifier will go last.

The top nine (9) competitors in the trials will qualify for the finals in field events (one (1) more than the number of medaled places).

The starting heights for the high jump and pole vault will be determined by the Games Committee (The Commissioner, designated KHSAA Staff and senior meet management) and sent to schools prior to the state meet.

The Games Committee (The Commissioner, designated KHSAA staff and senior meet management) reserves the right, per NFHS rules, to adjust starting height due to unforeseen conditions.

MARSHALS AND MARSHALLING

There will be a marshaling area in the vicinity of the finish line for athletes to report to immediately following each race.

The athletes will be released quickly, unless there is a violation during the race.

After competing in any finals, the athletes are to immediately proceed to the awards area.

RULES/POINTS OF EMPHASIS/CLARIFICATIONS/APPEALS

COMPETITION RULES

The championships shall be contested using the KHSAA Competition Rules as adopted by the Board of Control and a link to these rules is included at the end of these instructions.

WIRELESS COMMUNICATION

Electronic devices may be used in unrestricted areas and coaching boxes, provided the location does not interfere with progress of the competition as determined by the meet official.

Electronic devices shall not be used to transmit information to the competitor during the race or trial.

Electronic devices shall not be used for any review of an official's decision.

FORMS

Appeal forms will be available at the check-in tent by request of a participating coach.

APPEAL PROCEDURE

A coach shall first protest to the appropriate Referee.

- If the coach still feels that the terms and conditions of competition or the application of the rules have been misapplied or misinterpreted, the written appeal shall be made and submitted to the Meet Director.
- Appeals shall be submitted by the HEAD COACH ONLY to the Meet Director at the finish line.
- The director will then submit it to the appropriate official.
- Appeals must be put in writing and submitted immediately (within 10 minutes) after the situation occurs. There will be extra appeal forms available at the team entrance tent for this purpose.
- The jury of appeals shall be the final authority and only those issues for which the NFHS rules specify are appealable.

APPEALABLE SITUATIONS

Situations which are subject to appeal include, but are not limited to:

- Misapplication of the rules, which must be filed within 10 minutes after the announcement of event results.
- Correction of clerical or team scoring errors which may be corrected up to 48 hours after the end of the meet, unless another time period is specified in advance by the Games Committee or Meet Director.
- Correction of meet results involving an ineligible participant which may be made at any time when discovered.
- Failure to follow a procedure contained in the terms and conditions of competition announced in advance by the Games Committee or Meet Director, such as the time schedule, the number of qualifiers to advance, number of trials, etc.

NON-APPEALABLE SITUATIONS

The following are non-appealable situations:

- Any judgment decisions pertaining to violations or alleged violations of the rules.
- A decision made by the finish judges or timers that does not involve misapplication of a rule, or the terms and conditions of competition.

- Whether a start is fair and legal.

STATE EVENT OFFICIALS

In compliance with the Federal Court Decree, the Commission composed of the Commissioner and the four (4) assistants will assign all officials.

Officials presiding over the event are licensed and assigned by the KHSAA.

POST EVENT

RESULTS

Results will be finalized and made official at the conclusion of each event.

Once meet officials validate the results, they will be announced at the event and posted on the KHSAA website.

A QR code linking to results will be posted near the concession stand and near tent city.

TROPHIES AND AWARDS

Medals will be awarded for the first eight (8) places in each event.

Team trophies will be given to the top four (4) teams in each class and each gender immediately following the last event.

The individual, relay and team awards area will be located inside the track.

Competitors shall report to the awards area immediately following the finals in each event.

Athletes involved in other events who are not able to stay for the awards presentation can pick up their medals at a later time.

Teams shall be present to receive their awards. As soon as the trophies have been presented, the top four (4) teams in each class are to assemble for official meet pictures.

Only credentialed media members may take photos during the awards presentation.

FINANCES AND EXPENSES

There is no school reimbursement for this event.

Member schools are responsible for all expenses incurred for participation.

The KHSAA underwrites the expenses of facility rental, security, first aid, officials and event workers.

IMPORTANT WEBSITE LINKS

- [Track & Field Website](#)
- [SI114 - Spring KHSAA Championship Media Credentials](#)
- [Competition Rules](#)
- [Time Schedule](#)
- [Layout and Logistics Map](#)
- [Bus Route Map](#)
- [Parking Map](#)
- [Team Hotel Accommodation Information](#)
- [TR120 \(Medical Information - Inhaler\)](#)
- [GoFan Digital Event Tickets](#)
- [GoFan Ticket Training](#)



THE KENTUCKY OFFICE OF HIGHWAY SAFETY TEAMING UP WITH THE KHSAA TO DRIVE HOME A LIFE-SAVING MESSAGE FOR ALL MOTORISTS –
BUCKLE UP AND PUT THE PHONE DOWN.

THESE BASIC SAFETY PRACTICES MAKE A CONSIDERABLE DIFFERENCE IN PREVENTING CRASHES AND LESSENING THE SEVERITY OF INJURIES AND THE NUMBER OF DEATHS ON OUR ROADWAYS. EACH YEAR IN KENTUCKY, DISTRACTED DRIVING RESULTS IN MORE THAN 50,000 CRASHES, MORE THAN 15,000 INJURIES AND APPROXIMATELY 200 DEATHS. [LEARN MORE AT KYHIGHWAYSAFETY.COM.](http://KYHIGHWAYSAFETY.COM)