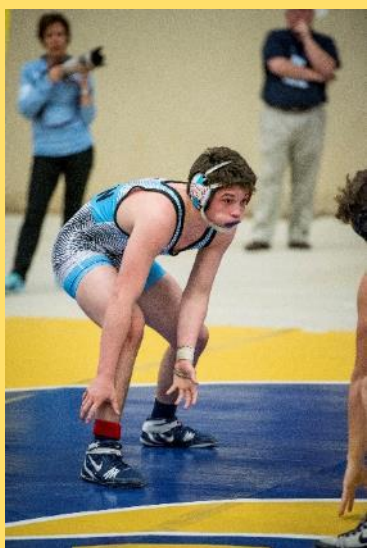




2018 KHSAA STATE WRESTLING CHAMPIONSHIPS INSTRUCTIONS



2018 WRESTLING STATE TOURNAMENT INFORMATION

BRIEF WELCOME	2
STAFF CONTACTS	2
QUALIFYING FOR PARTICIPATION IN CHAMPIONSHIP	2
PRE-EVENT LOGISTICS.....	2
CONFERENCE CALL	2
GPS COORDINATES	2
DIRECTIONS.....	2
PARKING	3
LODGING.....	3
BYLAW 22 REMINDER	3
COMPETITION DATES AND SCHEDULE.....	4
OFFICIAL SCALES AND WEIGH-INS.....	4
DAY ONE	4
DAY TWO	4
PRACTICE	4
PRE-TOURNEY ON-SITE MEETINGS	4
ADMISSION INTO VENUE	4
TEAM ENTRY	4
TICKETS	4
COOLERS	5
BEDDING	5
VENUE LOGISTICS.....	5
DRESSING/LOCKER ROOMS.....	5
CONDUCT OF EVENT	5
BRACKETS	5
DRAW.....	5
SCOREBOARDS.....	5
INCLEMENT WEATHER	5
RULES POINTS OF EMPHASIS/CLARIFICATIONS.....	6
ROSTER AND SUBSTITUTIONS.....	6
HEALTH INFORMATION	6
ATHLETIC TRAINER.....	6
VENUE SAFETY EAP.....	6
EMERGENCY ACTION PLAN	6
INHALER/SKIN	6
STATE EVENT OFFICIALS.....	6
SPORTSMANSHIP.....	7
MEDIA	7
SCHOOL MEDIA.....	7
TRADITIONAL MEDIA	7
MEDIA RIGHTS FEE.....	7
TEAM BROADCASTS.....	7
VIDEOTAPING.....	7
EVENT MERCHANDISING	8
POST EVENT	8
RESULTS	8
CHAMPIONSHIP PHOTOS	8

TROPHIES AND AWARDS.....	8
NFHS COACH OF THE YEAR.....	8
ANNIVERSARY TEAM RECOGNITION	8
FINANCES AND EXPENSES	8
IMPORTANT WEB LINKS.....	8

BRIEF WELCOME

- Congratulations from the Board of Control and staff of the Kentucky High School Athletic Association on advancing to the state championships
- It is hoped that these instructions answer most questions about participation in the 2018 KHSAA State Wrestling Championships

STAFF CONTACTS

- Administrators and Coaches should contact Assistant Commissioner Michael Barren (mbarren@khsaa.org) or his Administrative Support Specialist Larrecia Williams (lwilliams@khsaa.org) at the KHSAA offices should you have any questions
- If you cannot reach Mr. Barren for any reason, contact Assistant Commissioner Sarah Bridenbaugh (sbridenbaugh@khsaa.org), who is the secondary contact for Wrestling.
- Media and Statistics Inquiries should be directed to Communications Director Joe Angolia at the KHSAA offices (jangolia@khsaa.org)
- Inquiries may also be directed to the KHSAA offices at (859) 299-5472 and any member of the staff should be able to refer you to the correct party

QUALIFYING FOR PARTICIPATION IN CHAMPIONSHIP

- The top four (4) wrestlers in each weight class shall advance from the region to their seeded slot in the state tournament
- In the event that a seeded wrestler is not able to participate in the State Tournament due to injury or other reason beyond the control of the wrestler, the appropriate seeded wrestler(s) will be moved up in the seeding, and the fifth place wrestler from the Regional Tournament will be seeded fourth

PRE-EVENT LOGISTICS

CONFERENCE CALL

- A conference call will be held for all participating coaches on Tuesday, February 13 at 10:00 a.m.
- Schools will be sent additional instructions regarding the call via email

GPS COORDINATES

- Please note that GPS and phone mapping functions may not accurately direct you to the Kentucky Horse Park
- Please use "4089 Iron Works Pike" (not "Parkway") as the street address when utilizing GPS and mapping software
- The Kentucky Horse Park is located at 4089 Iron Works Parkway, Lexington, KY 40511, one-half mile east of I-75 off Iron Works Pike (1973) at Exit 120

DIRECTIONS

- From Downtown Lexington
 - Take Newtown Pike (922) northbound approximately 9 miles to Iron Works Pike (1973)
 - At the four-way stop, turn left and travel westbound
 - The campground entrance will be on the right in 1.6 miles, and the park's main entrance will be on the right in 2 miles, just past the campground entrance
- From Louisville
 - Travel eastbound on Interstate 64 for approximately 70 miles to Interstate 75
 - Take Exit 75 northbound towards Cincinnati (merging traffic will join I-75 traffic in the left-hand lane and will have approximately .5 miles to move to the right-hand lane to get off at Exit 120)
 - At the top of the exit ramp, turn right and travel eastbound on Iron Works Pike (1973)

- The park's main entrance will be on the left in .5 miles and the park's campground entrance will be on the left in .9 miles
- From Northern Kentucky
 - Travel southbound on Interstate 75 towards Lexington to exit 120
 - At the top of the exit ramp, turn left and travel eastbound on Iron Works Pike (1973)
 - The park's main entrance will be on the left in .7 miles and the park's campground entrance will be on the left in 1.1 miles
- From South Central Kentucky
 - Travel northbound on Interstate 75 towards Lexington to exit 120
 - At the top of the exit ramp, turn right and travel eastbound on Iron Works Pike (1973)
 - The park's main entrance will be on the left in .5 miles and the park's campground entrance will be on the left in .9 miles
- From Eastern Kentucky
 - Travel westbound on Interstate 64 towards Lexington to Interstate 75
 - Interstate 64 will merge with Interstate 75 on the east side of Lexington, so take the merged I-64W/I-75N towards Cincinnati/Louisville to Exit 120 at Iron Works Pike (1973)
 - At the top of the exit ramp, turn right and travel eastbound
 - The park's main entrance will be on the left in .5 miles and the park's campground entrance will be on the left in .9 miles
- From Western Kentucky
 - Travel the Martha Layne Bluegrass Parkway, drive east
 - Turn left on Man o' War Blvd. and travel northbound for .3 miles
 - Turn right on US-60/Versailles Road and travel eastbound for 1.5 miles
 - Take the ramp on to KY-4 N/New Circle Road and travel 4.1 miles north/eastbound
 - Take exit 8 for US-25/Georgetown Road and turn left onto Georgetown Road and travel northbound towards Georgetown for 5.5 miles
 - At the stop light, turn right onto Iron Works Pike (1973)
 - The park's main entrance will be on the left in 1.2 miles and the park's campground entrance will be on the left in 1.6 miles

PARKING

- There is ample general parking on site
- Kentucky Horse Park will charge a \$5 parking fee which is fully retained by the Kentucky Horse Park
- Teams arriving in a school bus or marked school system vehicle will be admitted at no charge to park
- Buses dropping off participants will unload them on the south side of Alltech Arena (Alltech Way)
- Spaces will be blocked off to allow a bus to drop off participants
- After buses unload, they will proceed to the main parking lot in front of the arena and park in the lower section of this lot
- The bus driver can then be admitted through the pass gate at the participant entrance (Alltech Way)

LODGING

- Each coach will arrange for lodging for his or her contestants
- The tournament headquarters is the Fairfield Inn and Suites located at 2100 Hackney Place, Lexington, KY 40511

BYLAW 22 REMINDER

- KHSAA Bylaw 22 requires a member of the faculty of the school to be present along with any student-athlete who is representing a member school
- See Bylaw 22 in the KHSAA Handbook if you have any questions

COMPETITION DATES AND SCHEDULE

- The 55th Annual KHSAA State Wrestling Championships will be held on February 16 & 17, 2018 at the Alltech Arena in the Kentucky Horse Park, 4089 Ironworks Parkway, Lexington, KY 40511 (www.kyhorsepark.com) (859-233-4303)
- A complete timetable is published on the KHSAA website as well as all other necessary information, and can be found through the links at the end of these instructions

OFFICIAL SCALES AND WEIGH-INS

- Each weight class will not receive any additional growth allowance after the regional tournament
 - Each weight class will have a one-pound growth allowance added after day one of the state competition
- ### *DAY ONE*
- The official weigh-ins will begin at 8:00 a.m. on Friday morning, February 16th
 - In accordance with the playing rules, the scale will close for each weight class when the first competitor of the succeeding class weighs in
 - The scales WILL CLOSE PROMPTLY after the last 285/287 person weighs in
 - Make sure your travel plans coincide with this schedule
 - In accordance with National Federation Rules, all athletes should be prepared to weigh-in at 8:00 a.m.
 - At approximately 9:00 a.m., wrestlers will assemble in the staging area for the Parade of Champions
 - Complete instructions for the parade will be provided to the coaches prior to the event

DAY TWO

- The official weigh-ins will begin at 8:00 a.m. on Saturday morning, February 17
- In accordance with the playing rules, the scale will close for each weight class when the first competitor of the succeeding class weighs in
- The scales WILL CLOSE PROMPTLY after the last 285/287 person weighs in
- Make sure your travel plans coincide with this schedule
- In accordance with National Federation Rules, all athletes should be prepared to weigh-in at 8:00 a.m.

PRACTICE

- There is no on-site practice time or opportunity
- ### *PRE-TOURNEY ON-SITE MEETINGS*
- There is no pre-competition on-site meeting
 - The conference call is scheduled to address your questions prior to the competition and review any last minute event logistics

ADMISSION INTO VENUE

TEAM ENTRY

- Coaches packets can be picked up at the Participant entrance of the Alltech Arena on Thursday afternoon between 3:00 and 6:00 p.m., or when the gates open on Friday
- The gates will open for the competitors and coaches ONLY at 7:30 a.m. on Friday and Saturday mornings
- It will be necessary for all coaches and team members to enter the arena on the south side/lower level off of Alltech Way
- Competitors entered into the tournament will be admitted with their participant bag tag escorted by a coach through the Participant entrance, including the regional 5th place finisher (alternate who must weigh-in to be admitted at no charge)
- Each school will receive admission credentials for coaches listed in their school's personnel data base on the KHSAA website, which must be worn at all times, including at all times when coaches desire to be mat side
- There will be no replacement for lost coaching passes

TICKETS

- An all-tournament two (2) day pass is available online for \$30 through the link at the end of these instructions
- At the venue, an all-tournament two (2) day pass is available for \$35 and will be sold through Friday
- Tickets will be priced at \$20 for a one (1) day pass

- Tickets for nonparticipants may be purchased at the time you pick up your coaches packet at the Thursday afternoon check-in session only
- All individuals entering the arena will need to be ticketed or admitted via the pass gate
- The gates will open for the general public at 8:30 a.m. on Friday and 8:00 a.m. on Saturday
- Please inform your parents and non-competing squad members about this timeline for entry as it will be rigidly applied

COOLERS

- A team may bring a single cooler which may be kept in the hall adjacent to participant check-in, but may not be brought into the arena
- Per the contract with the arena, coolers and other equipment used to transport food cannot be brought inside of Alltech Arena
- Athletes will be admitted with their gym/equipment bags
- Due to security concerns, all bags are subject to search

BEDDING

- Air Mattresses or other forms of "bed rolls" will not be permitted in Alltech Arena

VENUE LOGISTICS

DRESSING/LOCKER ROOMS

- There is one locker room provided on-site that does not have shower facilities
- Participants should arrive at the venue dressed and ready to compete

CONDUCT OF EVENT

BRACKETS

- A complete set of tournament brackets will be available in advance of the championship online
- The KHSAA will not be providing printed copies of the brackets to coaches

DRAW

- Per the competition rules, the commissioner shall draw each weight class individually for the pairings at the State Tournament
- The base draw by position will be posted to the KHSAA website, not later than 11 a.m. on Monday, February 12th
- The draw will be a blind draw with the 1st place from each region drawing a 4th place from another region
- These first place competitors cannot draw the 4th from their own region, nor can they be placed in the same bracket with the runner-up from their region
- The 2nd place competitors cannot draw the 3rd from their own region
- As soon as possible and practical, the regional results and state tournament entries will be on the KHSAA website

SCOREBOARDS

- Again this year, we have been able to secure eight score clocks for the tournament and their inclusion makes the tournament more enjoyable for coaches, wrestlers and fans alike, and we sincerely appreciate the advertisers who make their usage possible
- We will again make every effort to keep results posted on the video board in the end zone
- In addition, updated scoring will be available via KHSAA.org

INCLEMENT WEATHER

- In the event of inclement weather, updates on the schedule of events will be posted on the KHSAA website and released via Twitter

RULES POINTS OF EMPHASIS/CLARIFICATIONS

ROSTER AND SUBSTITUTIONS

- Should a school have an athlete finish 1-4 in the region and he/she is unable to compete in the state tournament due to schedule conflicts, injury or other documented reason, school representatives shall notify the KHSAA by noon on Thursday, February 15, 2018
- Failure to properly notify the Association of such a withdrawal will result in a penalty against the school in accordance with KHSAA Bylaw 27
- In the case of an athlete being unable to enter and being replaced, the remainder of the bracket will be "rolled-up", and the replacement wrestler seeded fourth
- If a bracket position is vacated and unable to be filled by an alternate from the region, the option will roll in random order to another region
- The random order will be determined and announced by the Association and posted on the website
- Coaches are advised to weigh-in any fifth place regional wrestler in case of replacement the day of the tournament

HEALTH INFORMATION

ATHLETIC TRAINER

- Athletic training services will be provided for participating teams during this event by the University of Kentucky Sports Medicine
- Athletic training Staff will be available beginning one hour prior to each session and remain available throughout the day
- Schools are reminded that they are responsible for ensuring that the parental permission to seek medical treatment is authorized from each participant
- The Principal, Athletic Director and/or the Head Coach can use a copy of KHSAA Form GE04 (the physical exam form) for this purpose, as this form contains appropriate language, and should bring that form for each athlete
- Any team desiring admission of its own certified trainer shall coordinate that admission with University of Kentucky Sports Medicine and teams will be given instructions during the conference call

VENUE SAFETY EAP

- Persons who attend KHSAA events may be injured as a result of the risks inherent in being a spectator at such events
- Attendance at championship events is a vital family and community based activity which is encouraged
- Please advise KHSAA or venue personnel of any situation you encounter which you or a squad member feels should be addressed to minimize risk to all involved

EMERGENCY ACTION PLAN

- Safety Tech EMT services will be on-site for this event to assist with any emergency
- In the event of injury or illness to any competitor, the injured person(s) will be transported to Georgetown Community Hospital, Good Samaritan Hospital or the A. B. Chandler Hospital at the University of Kentucky
- KHSAA Staff will, in consultation with Safety Tech EMT and the Athletic Training Staff and Venue personnel, coordinate an Emergency Action Plan for this event which will be available upon arrival on-site from the Athletic Training Staff

INHALER/SKIN

- The KHSAA will provide medical staff to make skin checks during weigh-ins
- If needed, please have an updated WR111 form available for their review

STATE EVENT OFFICIALS

- Officials presiding over the event are licensed and assigned by the Kentucky High School Athletic Association

SPORTSMANSHIP

- The Kentucky High School Athletic Association requires officials to enforce sportsmanship rules
- High School Athletics emphasize positive values
- All parties have worked hard to create a sense of teamwork, respect, responsibility and perspective
- We remind you that officials expect good behavior and will quickly penalize misconduct
- We encourage and appreciate your help
- Let this competition reflect mutual respect among all participants and officials

MEDIA

SCHOOL MEDIA

- Each school is permitted one (1) school media pass at KHSAA State Championship events, valid only for a full-time staff member or a student for the sole purpose of reporting the events and for taking non-commercial pictures for yearbooks, school publications, etc.
- Outside entities such as professional photographers, videographers or parents may not utilize the school media pass
- This pass must be requested in advance of the start of the event through the online system
- Due to space limitations and the potential for overcrowding, school media will not be permitted floor access at State Wrestling

TRADITIONAL MEDIA

- Traditional media members (print, TV, radio, online interested in covering KHSAA State Championship events should apply for credentials through the KHSAA's online system
- Applications should be submitted by the editor or director at each organization
- Freelance photographers will not be granted access to KHSAA events unless the requisite media rights fee is paid

MEDIA RIGHTS FEE

- Freelance/commercial photographers and radio stations interested in originating a broadcast of a KHSAA State Championship event, are subject to a media rights fee
- Information regarding the media rights fee for each event is available through the online credentialing system

TEAM BROADCASTS

- By paying the requisite fee, each school qualifying for a KHSAA State Championship event may designate one (1) radio station or website to originate an AUDIO-only broadcast of each game its affiliated school participates in
- An official representative of the participating school shall designate to the KHSAA which station/website will be permitted to broadcast its game using the online system
- The radio station/website shall then apply for championship credentials through the KHSAA's online credentialing system
- Originating stations/websites will be subject to a media rights fee, which will be outlined through the online credentialing system
- The KHSAA is the only entity permitted to originate or authorize a video broadcast of KHSAA State Championship events

VIDEOTAPING

- External power sources may not be used by patrons
- One "Team Video" camera will be permitted in a designated area to tape only the contest of the team
- Spectators may videotape with a hand-held camera from the spectator area but may not in any manner transmit video live through any resource, including personal social media accounts
- Violators are subject to removal
- No "scout" videotaping is permitted

EVENT MERCHANDISING

- KHSAA State Championship apparel will be available for sale at the event and online post-event
- TeamIP is the exclusive vendor of championship apparel, please look for their tent at the championship event to purchase memorabilia
- No outside merchandise representative of the event may be produced by any other entity and sold or distributed inside the playing facility

POST EVENT

RESULTS

- Tournament results will be available through TrackWrestling.com with links posted on the KHSAA website

CHAMPIONSHIP PHOTOS

- The KHSAA pays for professional photography coverage of the event
- Official championship photos of the event will be available for purchase through the KHSAA's online photo gallery within 72 hours of the completion of the event
- Coaches/Parents WILL NOT be permitted to access the floor to take pictures at the awards ceremonies

TROPHIES AND AWARDS

- Trophies and Awards will be given to the top four (4) teams, and to the top eight (8) individuals in each weight class
- Wrestlers should stay in the awards area immediately following the conclusion of their medal bout, in order to participate in the awards presentation for their weight class
- Participation in the awards ceremony is NOT optional and is an expectation for entering the tournament
- The KHSAA has an official event photographer taking professional photos that will be available for purchase on the KHSAA website following the event, including the official team awards
- After the team awards are completed and venue teardown has begun, credentialed participants and coaches from the top four teams may take additional celebratory pictures
- The KHSAA and the Commissioner's Wrestling Advisory Committee have agreed to allow participating coaches an opportunity to participate in the medal ceremony at the conclusion of each class
- To participate in the medal ceremony, coaches must adhere to the following:
 - One (1) coach for each wrestler may stay in the awards area to assist with the medal presentation to their wrestler, with no other coaches permitted
 - Coaches, Athletic Directors and others are not permitted to use cameras or camera phones to take pictures during the Awards presentation
 - Only properly credentialed media members are permitted to take pictures during the awards ceremony

NFHS COACH OF THE YEAR

- The National Federation of High Schools' Coaches Association recognizes a Coach of the Year in each of the sports sanctioned by the KHSAA

ANNIVERSARY TEAM RECOGNITION

- Silver and golden anniversary teams (25th and 50th) will be recognized at each state championship if the school wishes to participate
- These teams will be recognized Saturday afternoon after the sixth round is complete

FINANCES AND EXPENSES

- There is no school reimbursement for this event
- Member schools are responsible for all expenses incurred for participation in this event

IMPORTANT WEB LINKS

- Wrestling Instructions including brackets and diagrams - <http://khsaa.org/sports/winter/wrestling/>
- Competition Rules - <http://khsaa.org/handbook/competitionrules/wrcompetitionrules.pdf>
- State Schedule - <http://khsaa.org/wrestling/2018/statemeettimetable.pdf>

- State Advance Ticket Sales – <https://gofan.co/app/school/KHSAA>
- Media Credentials - <http://khsaa.org/news-stats-pubs/media-resources/media-credentials/>
- School Media Requests - <http://khsaa.org/si103-school-media-request-form/>
- School Broadcast Radio - <http://khsaa.org/si113-school-broadcast-designated-radio-form/>
- Skin Condition Form - <http://khsaa.org/forms/wr111.pdf>
- Photo Gallery - <http://khsaa.zenfolio.com/>